



PAPA HĀNAUMOKUĀKEA  
Marine National Monument

*A World Heritage Site*

# NOAA ONMS Update May 13 - July 27, 2016

Presented to the NWHI Coral Reef Ecosystem Reserve Advisory Council  
Presented by: Athline Clark, NOAA Superintendent  
July 28, 2016



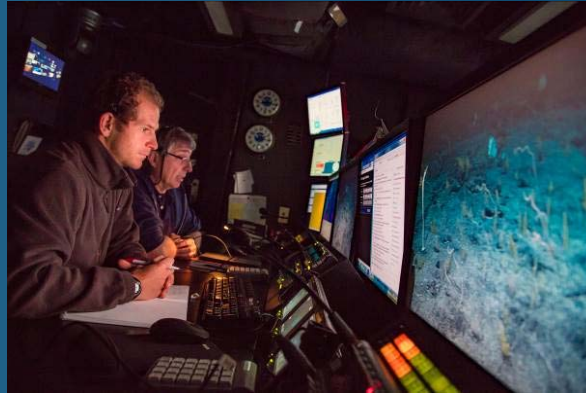


# CONSTITUENCY BUILDING & OUTREACH



# Media Events

PMNM's deep sea research featured on Discovery Channel & local TV science show



PMNM featured in UNESCO's World Heritage Magazine

PMNM 10<sup>th</sup> anniversary & potential expansion featured on local radio program



# PMNM Outreach Booth at the International Coral Reef Symposium



Clay reef  
critters  
made by  
conference  
participants



# EDUCATION



# Education Programs

PMNM organizes field trip for Hau'ula Hawaiian language immersion students



PMNM supports Navigating Change program at Camp Mokule'ia



PMNM participates in education activities at Hawai'i Children's Discovery Center, Punahou School, 'Iolani Elementary School





# MOKUPĀPAPA DISCOVERY CENTER HIGHLIGHTS



# Mokupapapa Discovery Center

- Since May 12, 2016 MDC has welcomed 9,067 visitors
- Hosted Arc of Hilo (adults w/cognitive & physical disabilities) for hands on lessons and art projects
- UH Doran Scholars visit
- Get Into Your Sanctuary Day – 238 visitors attend cooperative event with HIHW NMS and NMSAS
- Hosted Halua Kupukupu Innovations Academy & Science Camps of America



Google cardboard virtual reality viewers



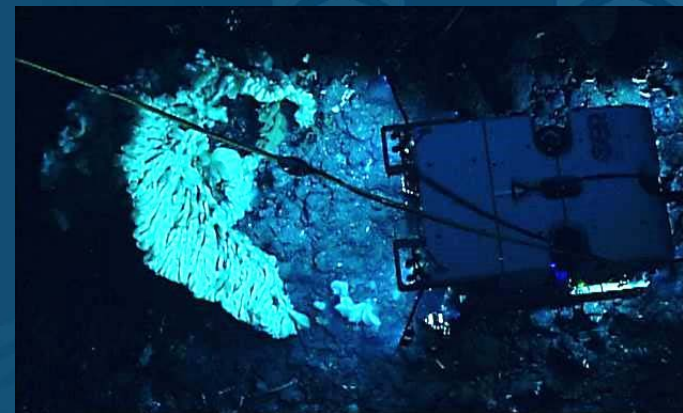
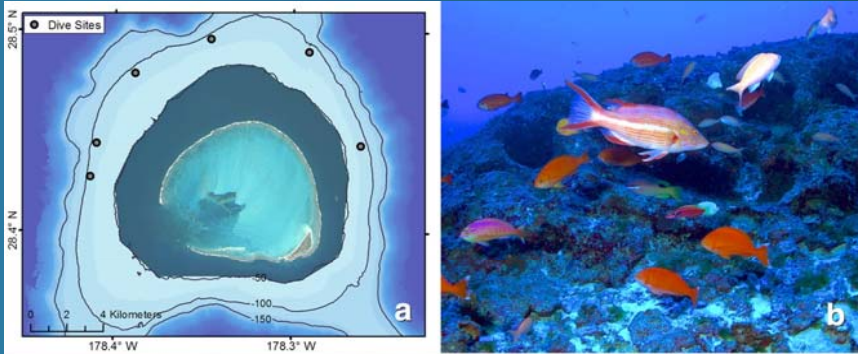


# FIELD & RESEARCH



# Marine Biodiversity Articles Published

Largest known sponge discovered  
in PMNM



PMNM scientists document 100%  
endemism in fish communities at  
Kure Atoll

# New Discoveries

2014



2015



2016



**PMNM scientists document  
coral mortality**

**PMNM scientists discover 2  
new fish species**





# AGENCY COORDINATION



## PMNM supports collaborative science with indigenous knowledge for climate solutions



PMNM NH Specialist at Rising Voices 4 workshop



*Proclamation*  
*In Recognition of*

**The 10<sup>th</sup> Anniversary of the Papahānaumokuākea  
Marine National Monument**

**WHEREAS**, June 15, 2016 marks the ten-year anniversary of the establishment of the Papahānaumokuākea Marine National Monument, an occasion that serves as an important reminder of our state's commitment to work cooperatively with the federal government toward the long-term conservation and protection of the resources of the northwestern Hawaiian Islands for future generations; and

**WHEREAS**, the area is biologically, historically, spiritually and culturally significant because of a marine environment that comprises nearly 70% of the coral reefs within the United States and in the northern end contains the highest rates of endemic sea life in the world; and

**WHEREAS**, the lands within Papahānaumokuākea support the largest seabird rookery on the planet, are the *only* home for four endangered land birds, and serve as an important pupping and nesting habitat for both endangered Hawaiian monk seals and Hawaiian green sea turtles; and

**WHEREAS**, these waters are considered some of the healthiest ocean environments on the planet and continue to serve as navigational pathways connecting our chain of islands for a variety of purpose, and are also considered historic because of the Battle of Midway during World War II and still includes Japanese and U.S. crash sites; and

**WHEREAS**, this region represents Pō, the area where Native Hawaiians believe all life originated and to which ancestral spirits return after death; the Monument also sits close to the Tropic of Cancer, known in Hawaiian as Ke Ala Polohiwa a Kane, the westward pathway for ancestral spirits; and it crosses the island of Mokumanamana which contains the highest concentration of ceremonial sites in our archipelago; and

**WHEREAS**, in 2010 the Monument was internationally recognized as a mixed (Cultural *and* Natural) World Heritage site by the International Union for the Conservation of Nature (IUCN), United Nations Educational Scientific and Cultural Organizations (UNESCO) for its outstanding universal cultural and natural value, and remains the only "mixed" World Heritage site in the United States; and

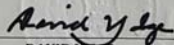
**WHEREAS**, *together* in the spirit of cooperative conservation, the state Department of Land and Natural Resources and Office of Hawaiian Affairs, and the federal National Oceanic and Atmospheric Administration and U.S. Fish and Wildlife Service, use an innovative resource management approach to mālama the Monument by employing adaptive and coordinated management strategies to build resiliency in response to global challenges such as a changing climate, and integrating traditional ecological knowledge with western science to enhance the overall understanding of the Monument's natural, cultural and historic resources to honor this *āina momona* (place of abundance);

**THEREFORE I, DAVID Y. IGE, Governor, and I, SHAN S. TSUTSUI, Lieutenant Governor, of the State of Hawai'i,** do hereby proclaim June 15, 2016 as

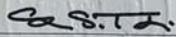
**"PAPAHĀNAUMOKUĀKEA MARINE NATIONAL  
MONUMENT DAY"**

and encourage the citizens of the Aloha State to recognize the ten-year anniversary of the establishment of Papahānaumokuākea Marine National Monument and to celebrate and honor the partnership of state and federal leadership that protects this treasured *pu'uhonua* (place of refuge).

**DONE** at the State Capitol, in the Executive Chambers, Honolulu, State of Hawai'i, on this fifteenth day of June 2016.



DAVID Y. IGE  
Governor, State of Hawai'i



SHAN S. TSUTSUI  
Lt. Governor, State of Hawai'i

# 10-Year Anniversary Recognition

**Governor Ige declares  
June 15, 2016  
"Papahānaumokuākea  
Marine National  
Monument Day"**

## Preliminary Proposed Expansion Coordination



**MMB host DC delegation  
from CEQ, NOAA, DOI,  
and DOD in May, 2016**

**Public listening sessions:**

**Oah‘u:  
Monday, August 1  
Filipino Community  
Center, Waipahu**

**Kaua‘i:  
Tuesday, August 2  
Kauai Community College,  
Lihue**

## Staff Changes: New Hires:

Lucy Kaneshiro, Administrative Assistant (Temp)  
Justin Umholtz, MDC Outreach Program Associate

## Departures:

Nakoa Goo, MDC Program Coordinator  
Stephanie Fisher, Program Specialist  
Daniel Wagner, Research Specialist

## Calendar:

- PMNM Proposed Expansion Public Meetings (August 1-2, 2016)
- PMNM Management Board Meeting (August 4, 2016)
- Opening of PMNM Exhibit at the Bishop Museum (August 13, 2016)
- IUCN World Conservation Congress (1-10 September 2016)



*Mahalo*

