



PAPAHĀNAUMOKUĀKEA

Marine National Monument

A World Heritage Site



Photo Credit: NOAA/Tate Wester

Maritime Heritage in Papahānaumokuākea

Kelly Keogh
PMNM Maritime Heritage Coordinator
Kelly.Keogh@noaa.gov



The 2015 Maritime Heritage Team:

Piggyback mission on the 2015 RAMP Expedition



Rebecca Weible, Jason Raupp, Melissa Price and Andy Collins



Land survey at Lisianski (above and above right) and Laysan (right)

Christening of S. S. Mission San Miguel



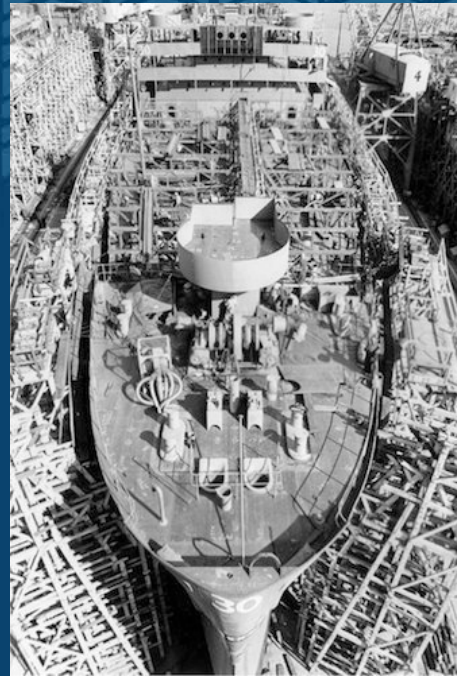
It was a great day for the Scots when the S.S. Mission San Miguel (Hull 16) went down Way 1 on October 11. Top billing went to Jack Hardie, Master Shipwright, and Superintendent of Ship Construction. Picture at upper left shows Mrs. Hardie breaking the champagne bottle across the bow while Lieutenant Leonard W. H. Hardie, Jack's son, and his wife stand by. Picture at upper right shows the family group. Lieutenant Hardie and his wife, who was Misses of Homer, and Mrs. John S. Hardie, Spensie, and Jack himself. At a special treat Jack Melvior, who turned to be a shipwright in the same Scottish shipyard as Jack, arranged for the Caledonian Pipers to play in the yard after the christening. Left to right, they are: Acting Piper Major John Biggar, Piper William Stronach, Piper J. K. MacKenzie, Jack Hardie, Leading Drummer J. Widdow, Piper Hugh M. Cullen (Secretary of the Caledonian Club), and Piper John Lane.

Mission San Miguel

Lost October 8, 1957 at Maro Reef

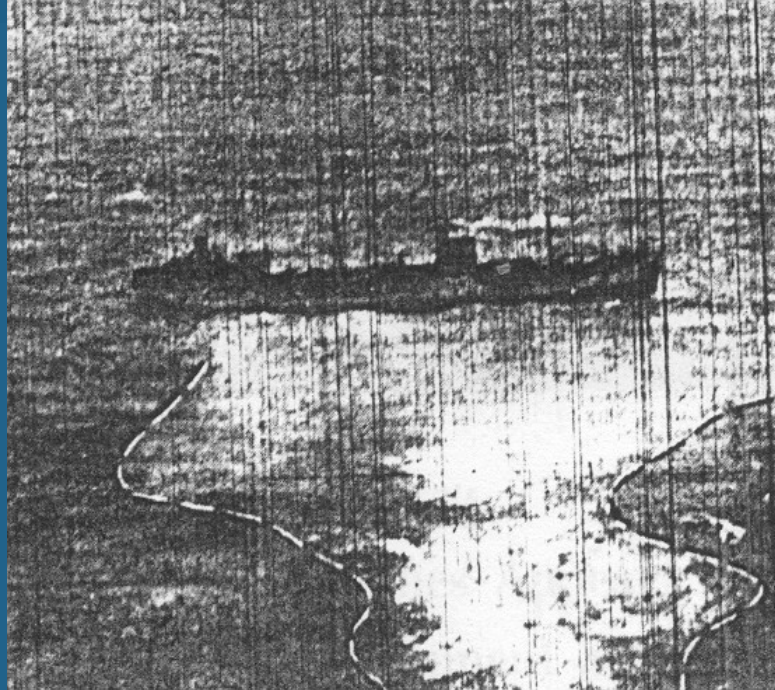
523' WWII era tanker

Lost in transit from Guam to Seattle
running at full speed and carrying only
ballast



Maro Reef

Mission San Miguel



AO-129 on the reef (PCA 10/11/57)

NOAA was able to update the Vessel Risk Factors for determining potential pollution risk. Revised pollution Potential score is LOW for worst case discharge and LOW for most probable discharge.

Maro Reef

Mission San Miguel



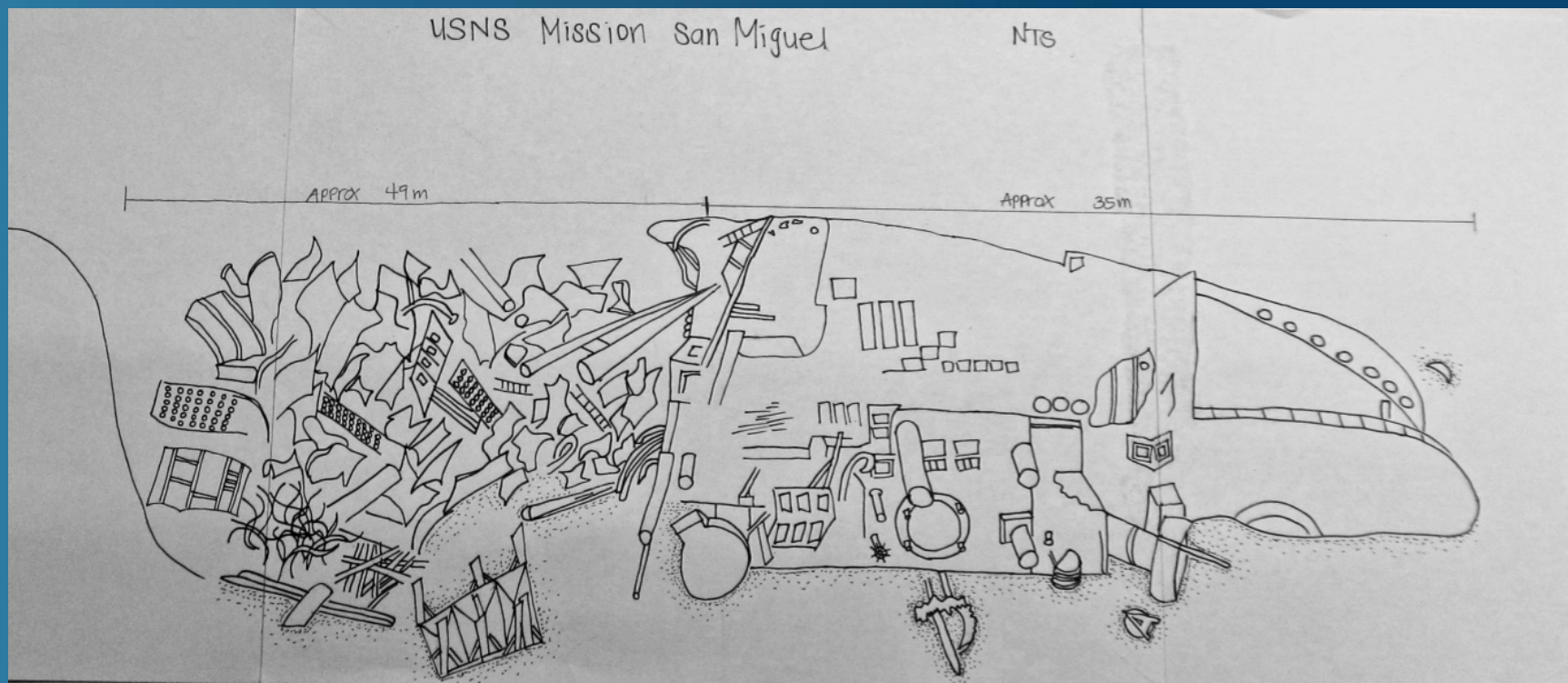
Maro Reef

Mission San Miguel

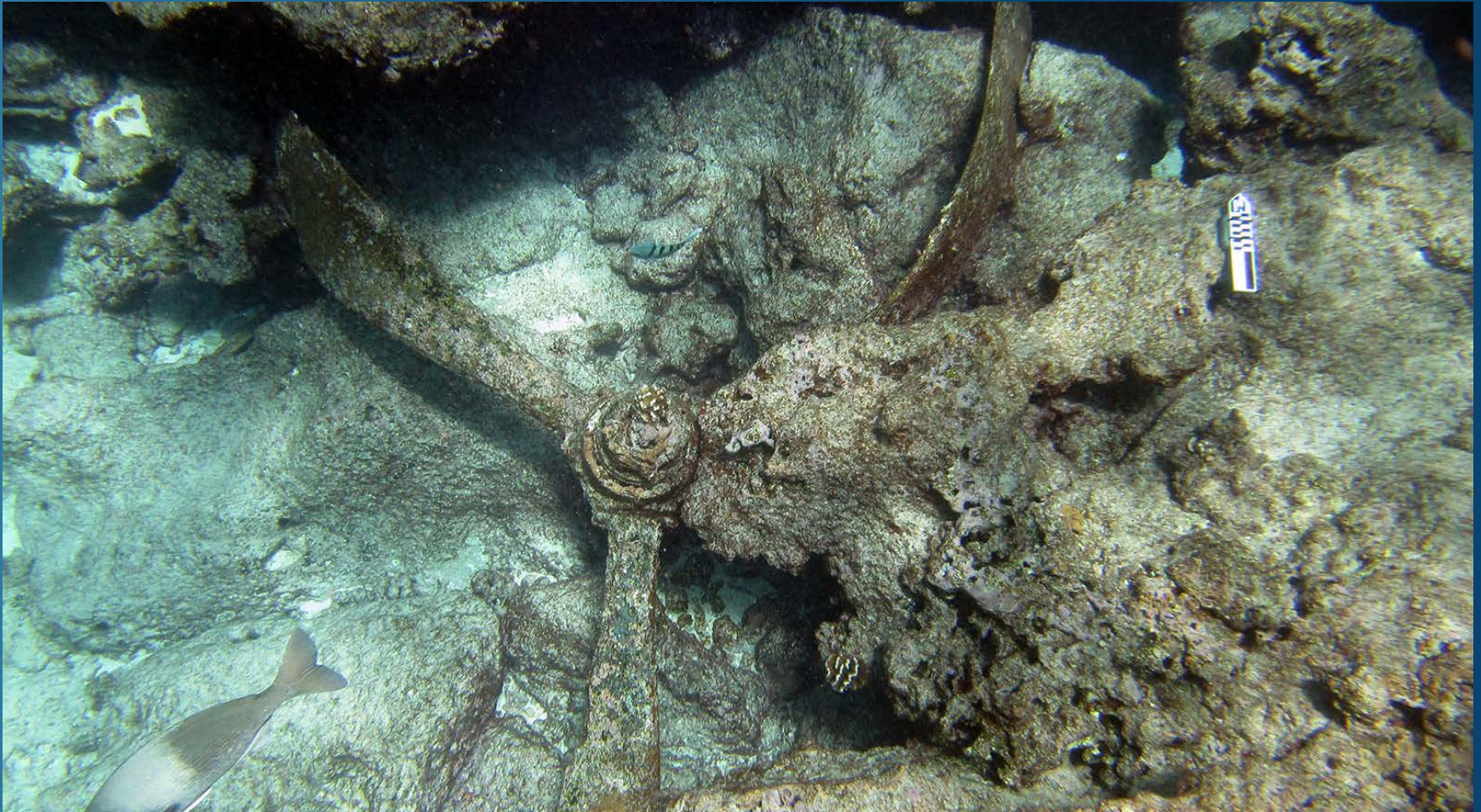


Maro Reef

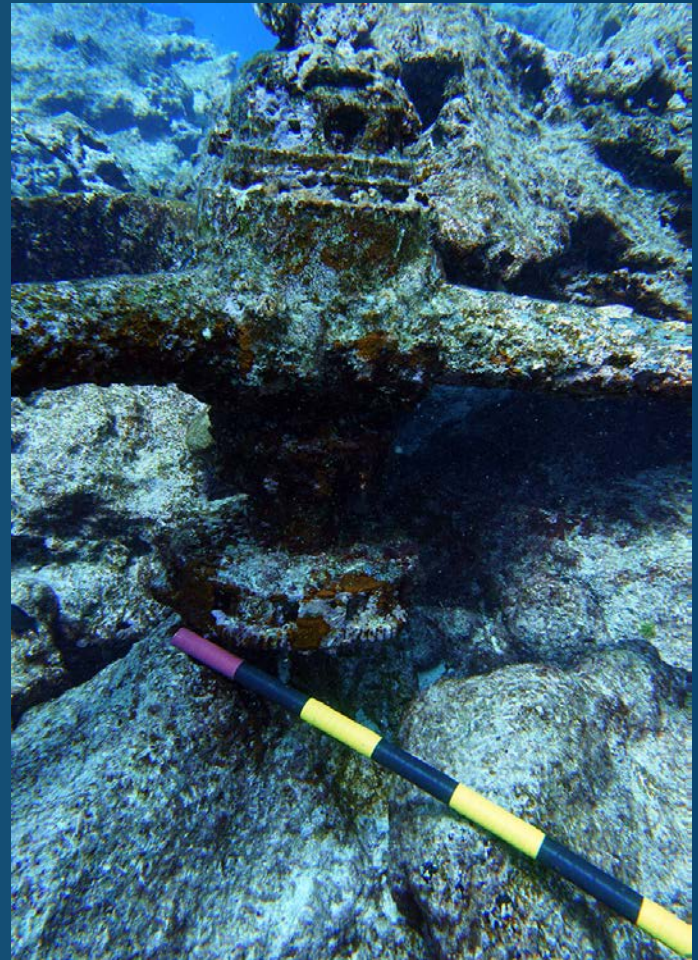
Mission San Miguel



New Plane Discovered at Midway Atoll



Propeller hub, blades & gears



Tail hook



Machine gun and cartridge

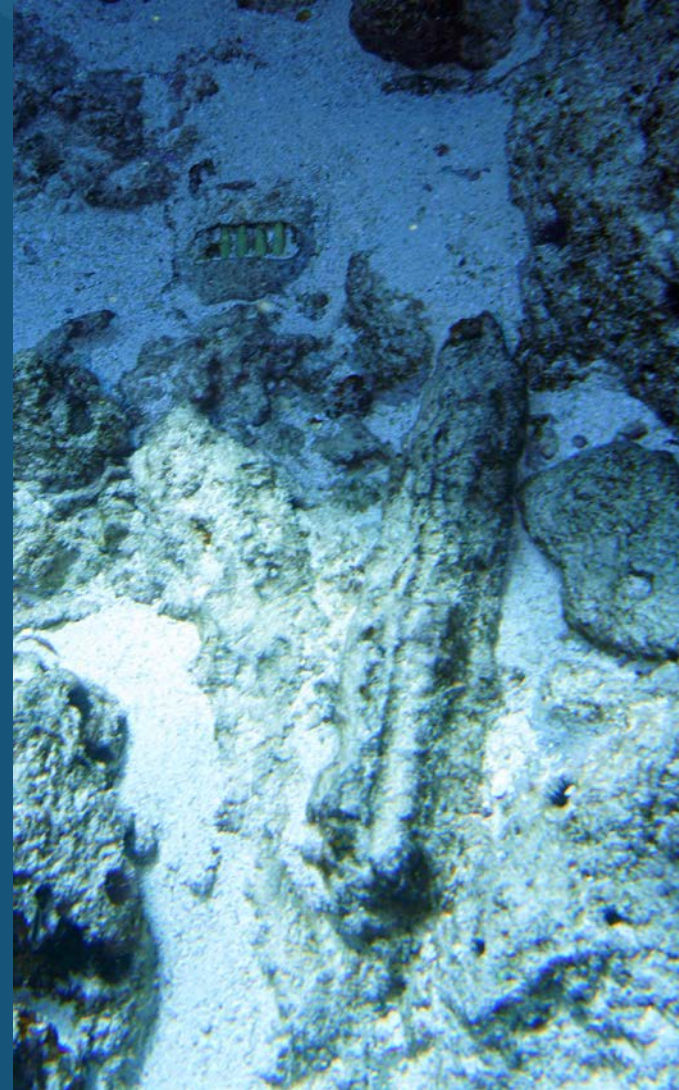
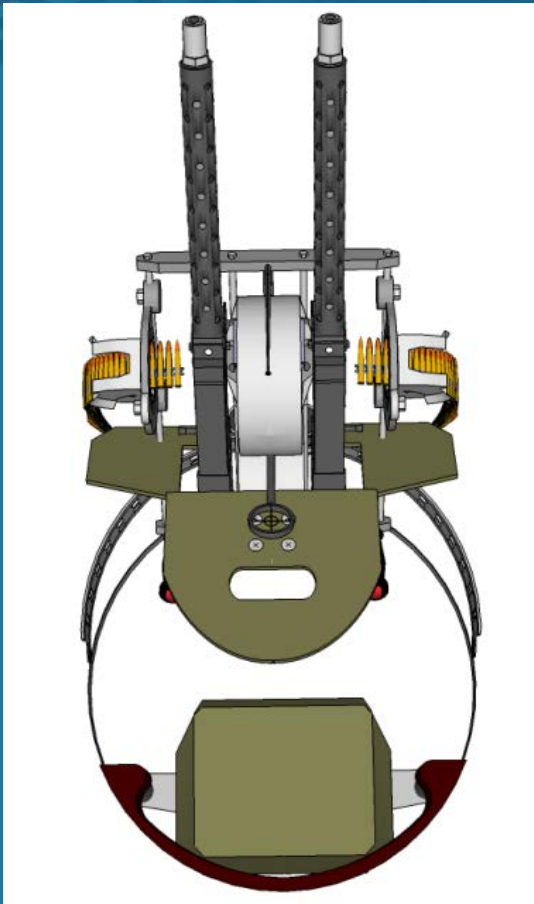
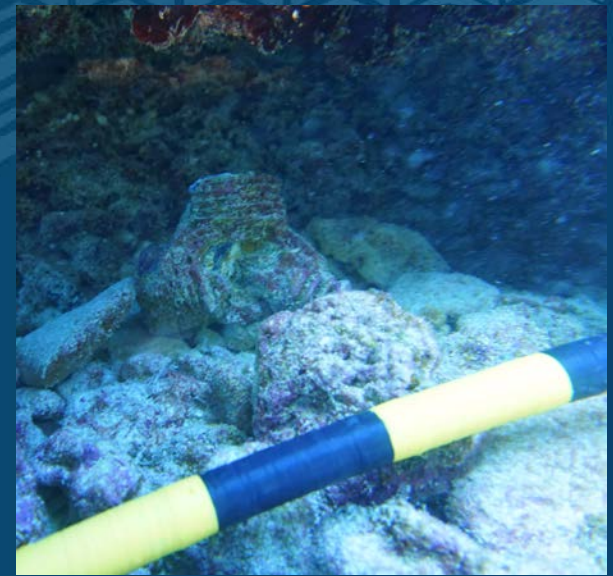


Photo Credits: Rebecca Weible & Jason Raupp

Artifact scatter throughout site



Rubber fitting



Radial engine cylinder cover



Miscellaneous aircraft parts near reef

Most Likely

Corsair



Photo Credit: Tane Casserley

Corsair at Midway Atoll in 110'

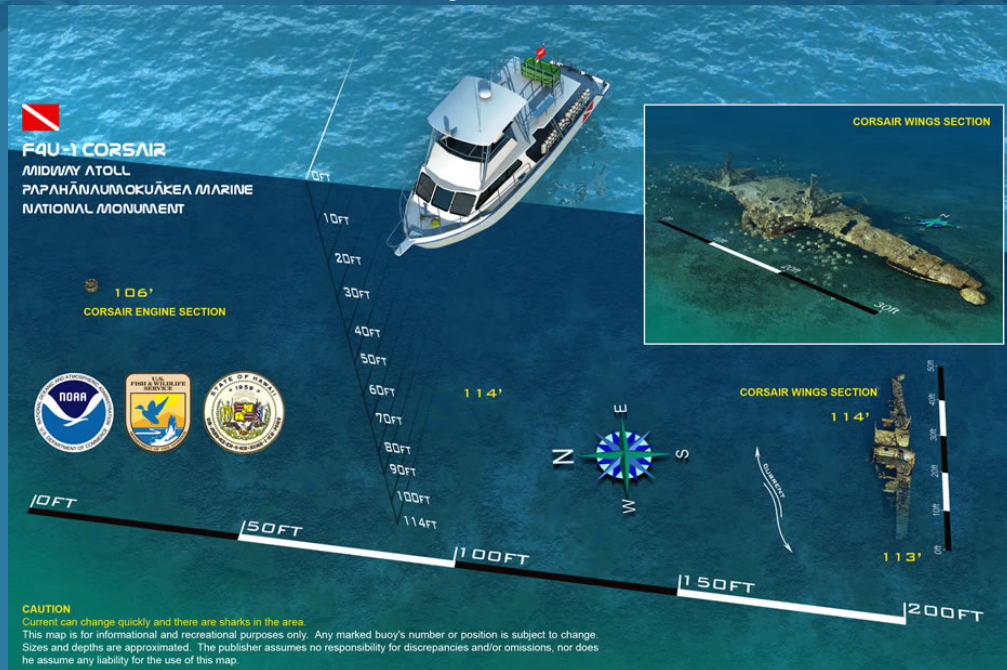


NASA Vought F4U-1 Corsair
NASA Langley Research Center

7/31/1943

Image # EL-2000-00231

Previously identified Aircraft Sites at Midway



Corsair F4U



P-40K Warhawk

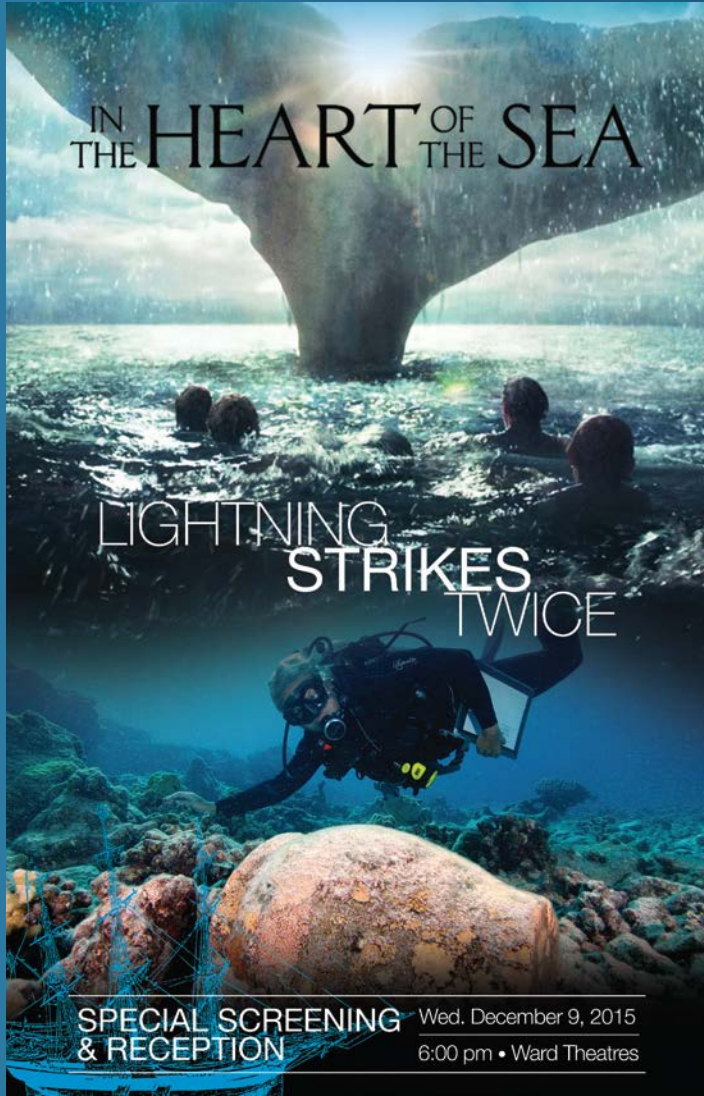


F2A-3 Brewster Buffalo



Photo Credits: NOAA/PMNM

“Lightning Strikes Twice” collaboration with Warner Bros Pictures



Special Screening event at Ward Theater on December 9th

Kelly.Keogh@noaa.gov

www.papahanaumokuakea.gov/maritime



Photo Credits: NOAA/PMNM