

CEU Honolulu



May 12, 2016



Mission Support





Kure Atoll Remediation Project Update



Mission Support



Background

- 1991-1992: USCG/USACE conducted sampling for PCBs
- 1993: Reburied 800 cubic yards of soils; 36 cyds removed off island
- 1993-1994: Post remediation sampling/reporting
- 2008-2012: SI/Alternative remediation testing
- 2012 – A Engineering Eval/Cost Analysis performed
- 2014 – Contract awarded for remediation.
- 2015 – Treatability study conducted.
- 2016 – Remedial Action

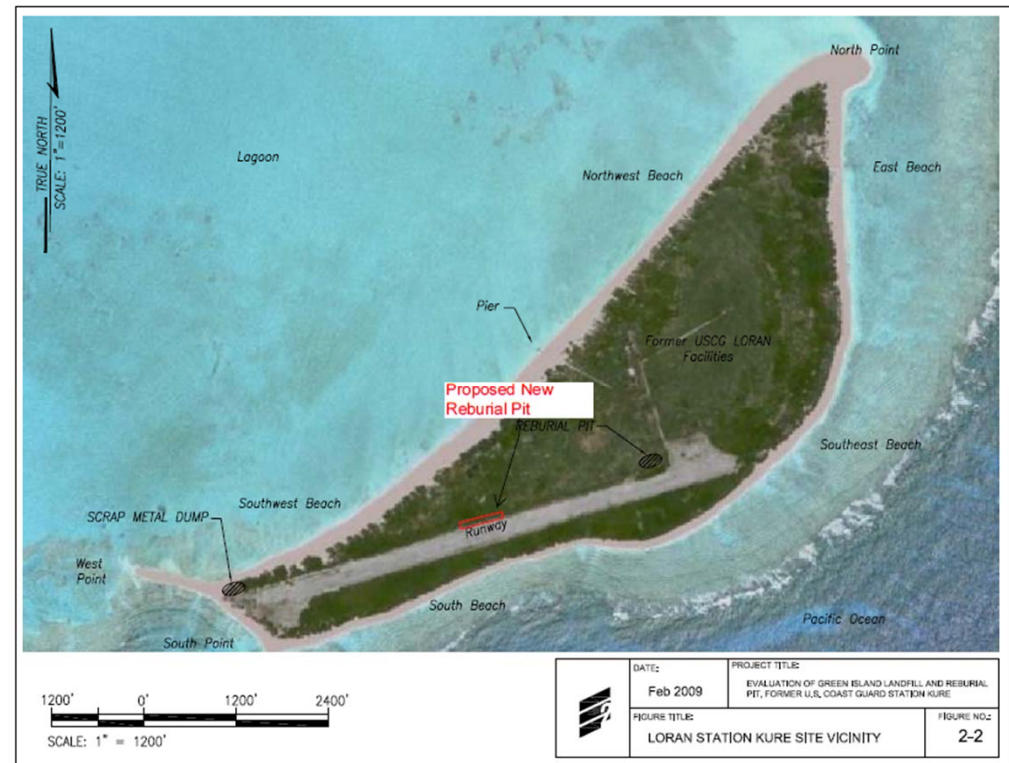


Mission Support



Project Plan

- Remediate through reburial upto 900 cu yds of PCB soils
- Prepare the new burial site with AC and additives to enhance microbial breakdown
- Install piezometers /biota sampling



Mission Support



Current Schedule

- May-June 2016: Finalize Work Plan
- May-August 2016: Assemble Gear/Equipment
- August 13 2016: Charter Vessel *Kahana* departs Honolulu for Midway Island
- August 17 2016: *Kahana* picks up field crew at Midway and proceeds to Kure Atoll
- August 19-20 2016: Begin Field Effort on Green Island
- September 9 2016: End Field Effort-crew returns to Midway



Mission Support