



PAPA HĀNAUMOKUĀKEA

Marine National Monument & World Heritage Site



National Marine Sanctuary Designation Status Update February 2, 2017



NATIONAL MARINE SANCTUARY SYSTEM



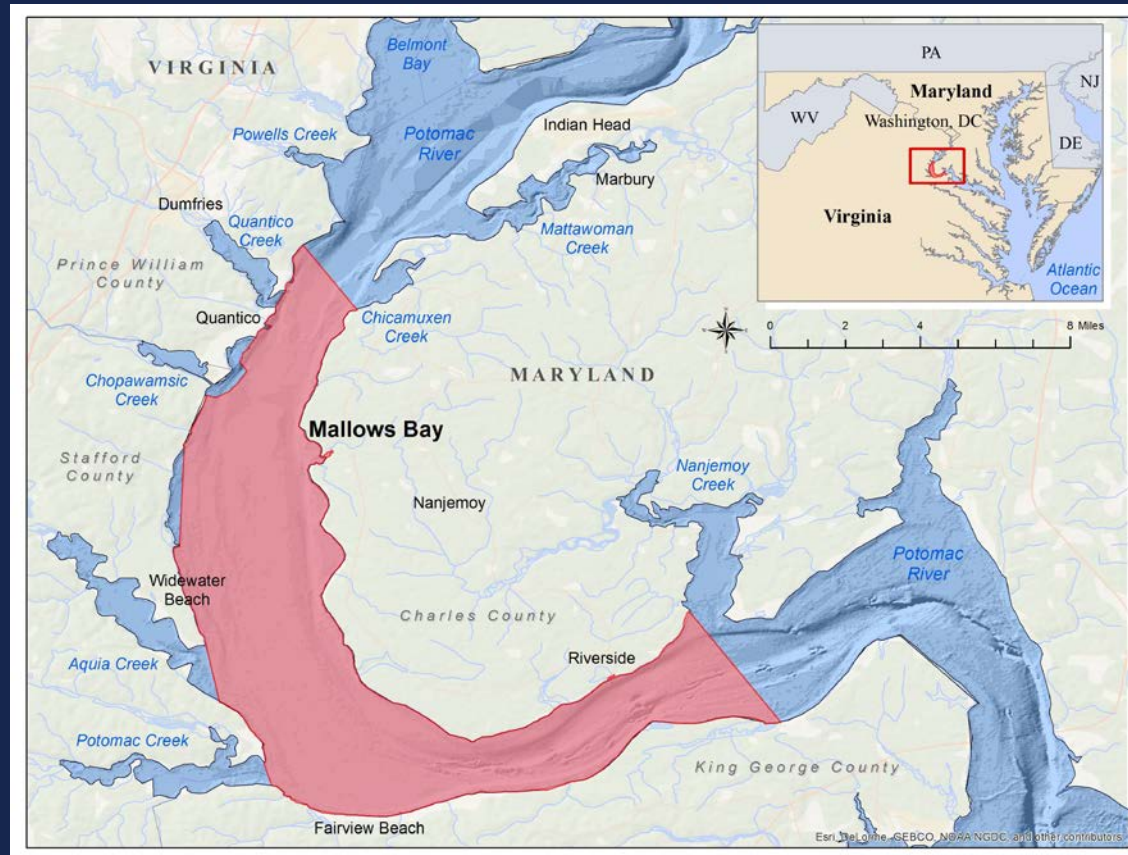
Mallows Bay

☉ 4 recommended alternatives:

- A) No sanctuary
- B) 18 sq. mi.
- C) 52 sq. mi. NOAA's preferred alternative
- D) 100 sq. nm

☉ Public comment period open until Mar 31, 2017

☉ 2 public meetings held in Maryland March 7 & 9, 2017



Mallows Bay



Wisconsin – Lake Michigan

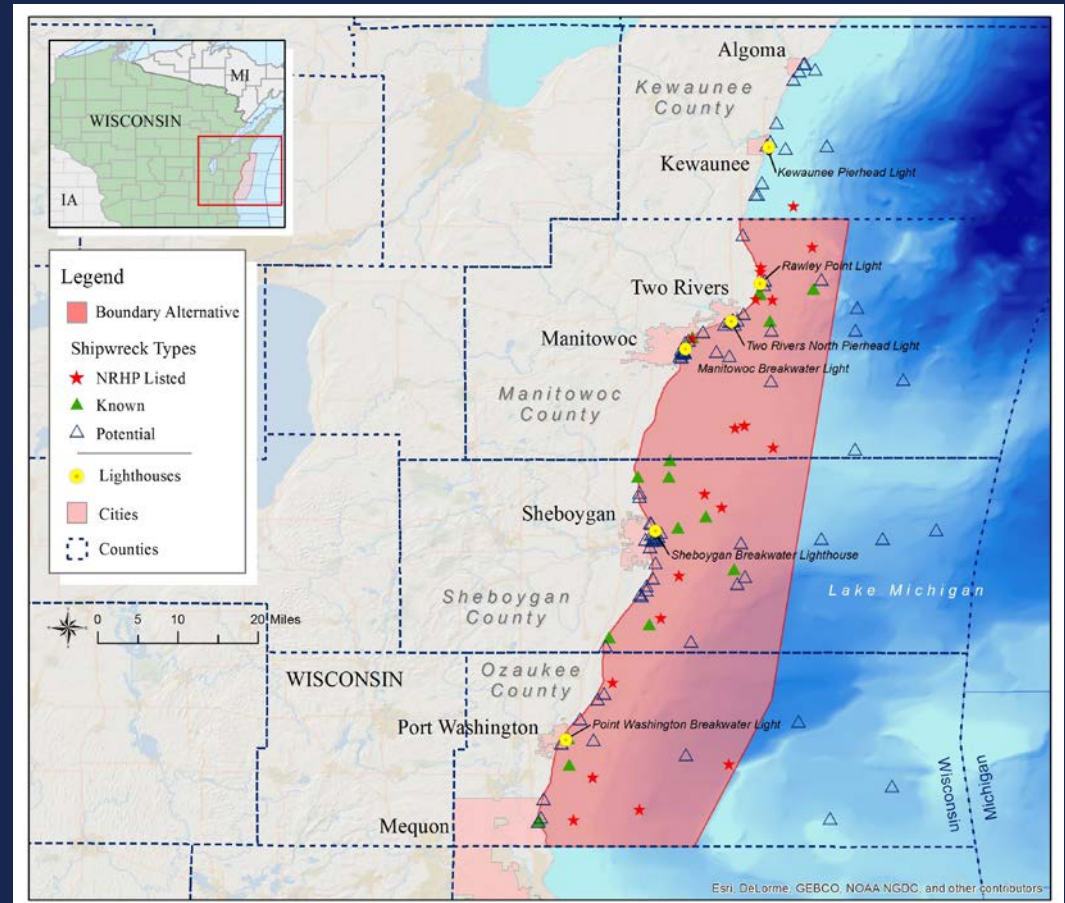
☉ 2 recommended alternatives:

A) 1,075 sq. mi., 37 known shipwrecks / 80 potential shipwrecks

B) 1,260 sq. mi., 38 known shipwrecks / 95 potential shipwrecks

☉ Public comment period open until Mar 31, 2017

☉ 4 public meetings held in Wisconsin March 13-16, 2017



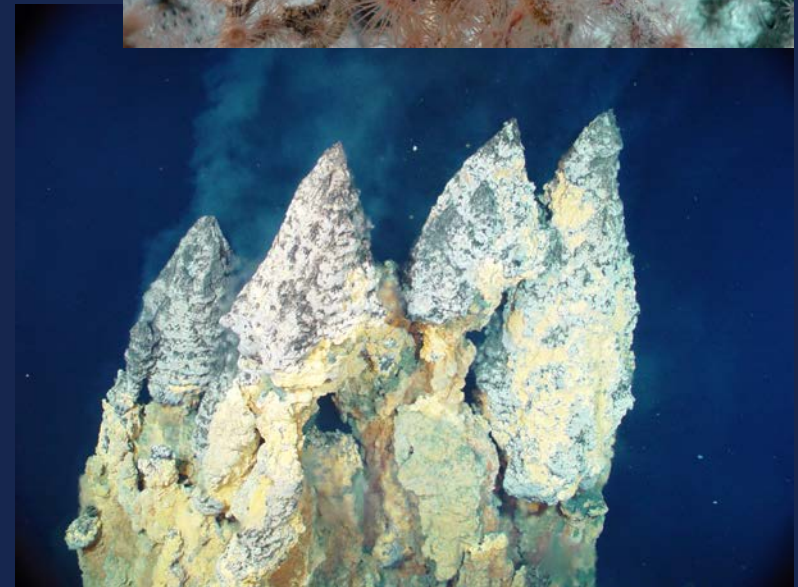
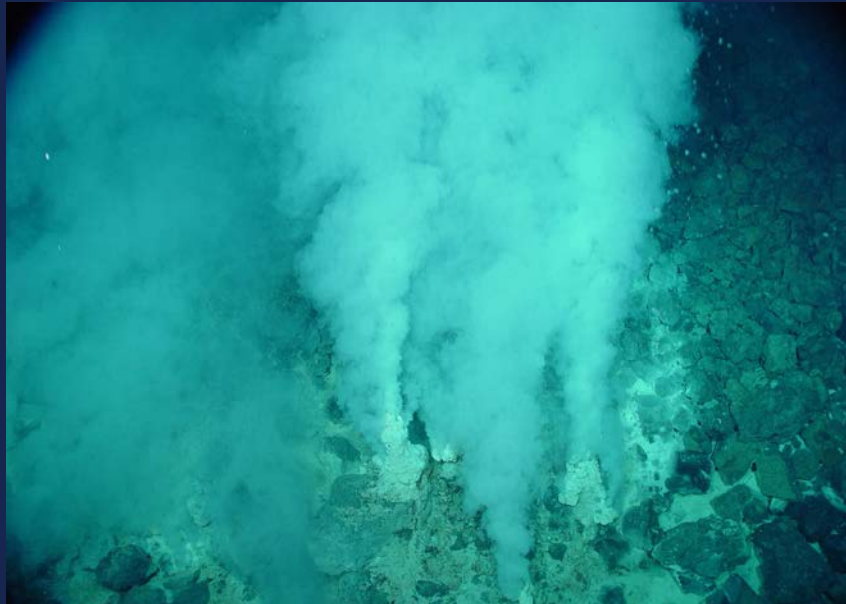
Wisconsin – Lake Michigan



CNMI

Mariana Trench Marine National Monument

- Deepest known location in the world's oceans
- Largest mud volcanoes on the planet
- Only known pool of liquid sulfur on the planet
- Variety of chemosynthetic communities
- Apex predator based ecosystem

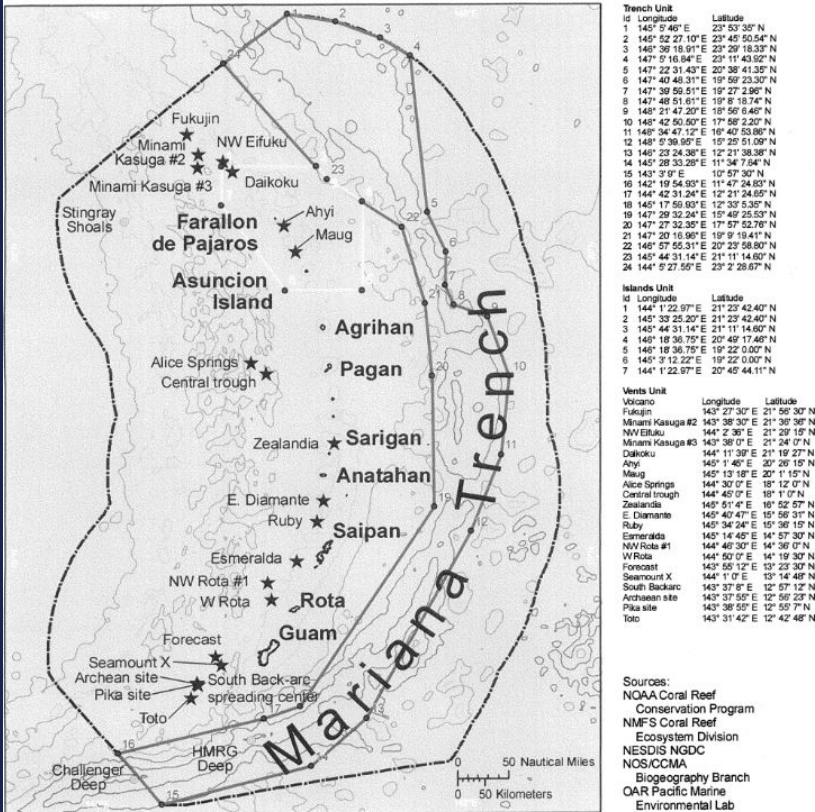


Mariana Trench Marine National Monument

- Established June 2009 by Presidential Proclamation under the Antiquities Act
- Part of the Pacific Islands Monuments Program under the Pacific Island Regional Office (PIRO), NOAA Fisheries (NMFS), NOAA, Department of Commerce **and** the Pacific Islands Refuges and Monuments Office, National Wildlife Refuge System, U.S. Fish & Wildlife Service, Department of the Interior
- FWS and NOAA Fisheries Co(co?)-Manage in “consultation” with Department of Defense and treating the Government of CNMI as a “cooperating agency”
- Monument Advisory Council with representatives from NOAA, FWS, Government of CNMI, Department of Defense, and U.S. Coast Guard
- Islands Unit: Commercial fishing prohibited but noncommercial, subsistence, and traditional indigenous fishing is allowed

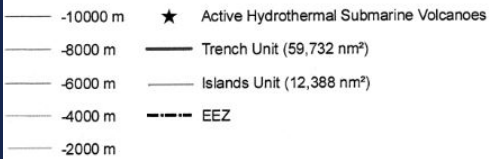
Mariana Trench Marine National Monument

Marianas Trench Marine National Monument



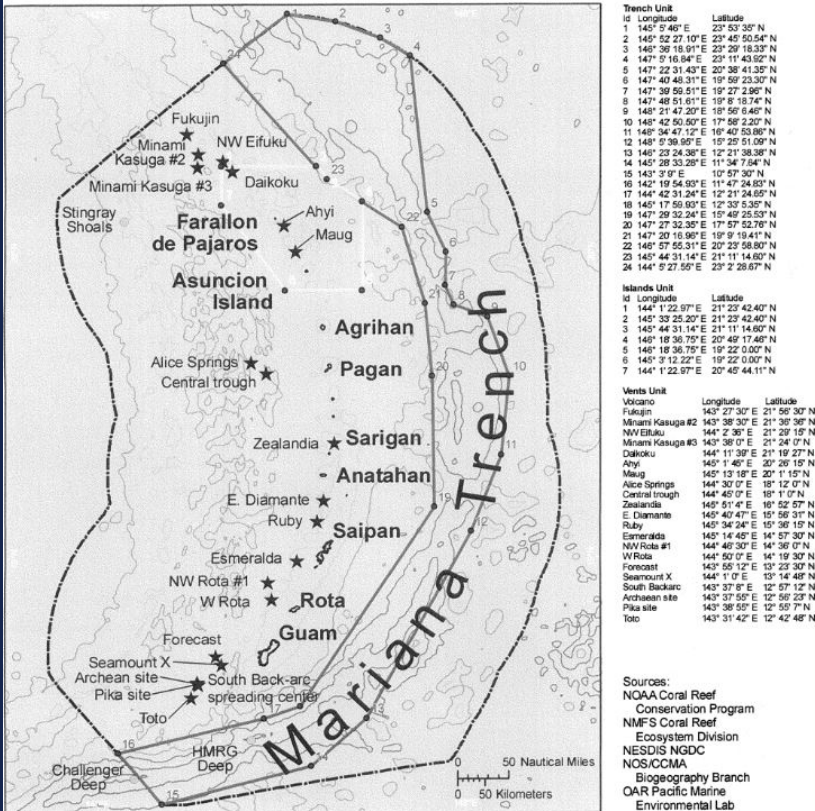
• Includes three distinct units encompassing 95,216 square miles (246,608 square kilometers):

- The **Islands Unit** comprising the **waters and submerged lands** of the three northernmost Marianas Islands out to approximately 50 nm (CNMI retains management authority for all three islands above the mean low water line)
- The **Volcanic Unit** comprising the **submerged lands (but not water)** within one (1) nautical mile of 21 designated volcanic sites
- The **Trench Unit** comprising the **submerged lands (but not the water)** stretching approximately 900 miles through the EEZ's of the U.S. territories of Guam and CNMI



Mariana Trench Marine National Monument

Marianas Trench Marine National Monument



• Why did the boundaries and management structure turn out this way?:

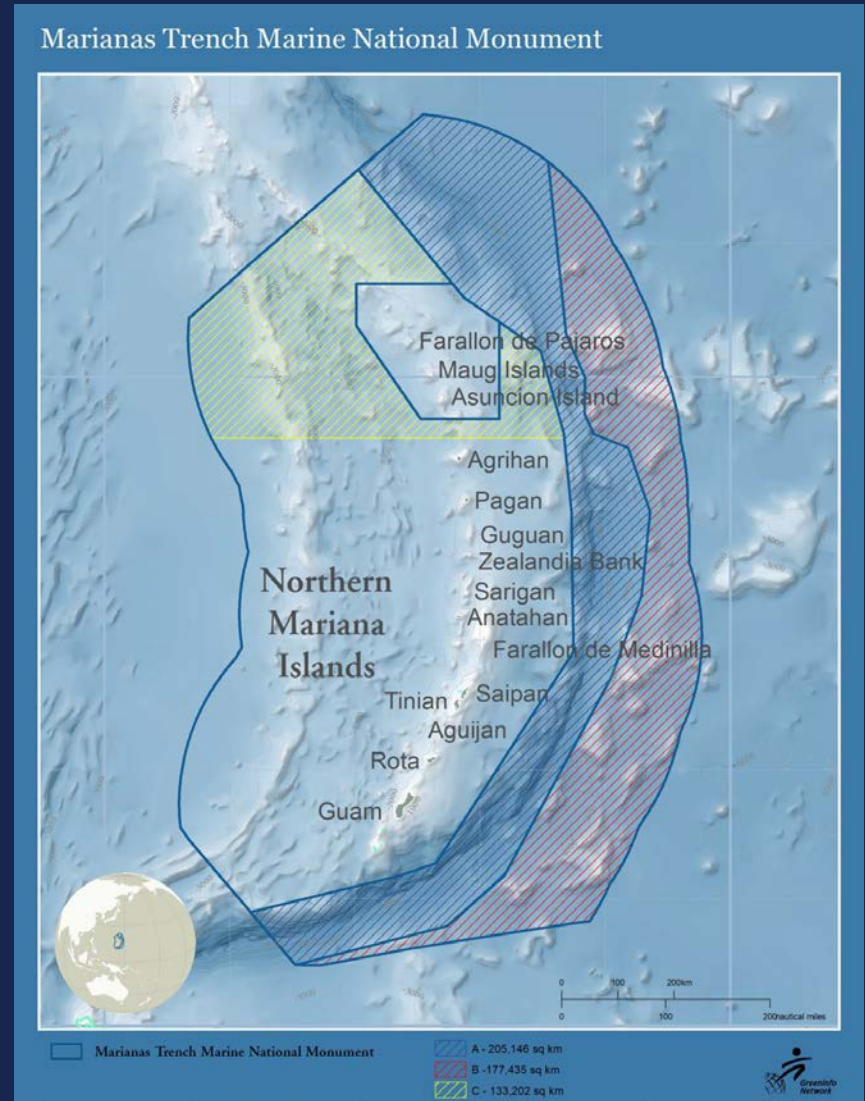
- Large U.S. military presence on Guam
- Commercial fishing
- Divide between conservation organizations and local governments & communities

- -10000 m ★ Active Hydrothermal Submarine Volcanoes
- -8000 m — Trench Unit (59,732 nm²)
- -6000 m — Islands Unit (12,388 nm²)
- -4000 m - - - - EEZ
- -2000 m



CNMI

- ☉ Drafted by PEW and Friends of the Marianas Trench
- ☉ Has support of CNMI Governor & Congressional representative
- ☉ After review by ONMS staff, nomination was determined to be worthy of further in-depth review



CNMI



Nomination highlights:

- ⌘ Requests sanctuary management be conducted by local CNMI folks with funding from federal govt
- ⌘ Sanctuary not diminish any existing Monument protections
- ⌘ Monument should still exist with NMS overlay
- ⌘ Regulations should include exemptions for cultural practices





Questions?