

Seafaring in the Papahānaumokuākea Marine National Monument



Whaling ship Daniel Wood, wrecked at French Frigate Shoals 1867 (Image courtesy of MIT)



U.S.S. Tanager (AM-5) at Pearl Harbor before sailing to the Northwestern Hawaiian Islands, 1920s (Photo courtesy of Bishop Museum)



Sailing vessel, Dunnottar Castle, wrecked at Kure Atoll in 1872 (Photo courtesy of San Francisco History Center, San Francisco Public Library)



Schooner Churchill, lost at French Frigate Shoals 1917 (Photo courtesy of Tall Ships of San Francisco)



Double hulled sailing canoe, Hokulea, sailing in the Papahanaumokuakea Marine National Monument (Photo courtesy of Na'alehu Anthony)

www.papahanaumokuakea.gov



Seafaring in the Papahānaumokuākea Marine National Monument



Whaling ship Daniel Wood, wrecked at French Frigate Shoals 1867 (Image courtesy of MIT)



U.S.S. Tanager (AM-5) at Pearl Harbor before sailing to the Northwestern Hawaiian Islands, 1920s (Photo courtesy of Bishop Museum)



Sailing vessel, Dunnottar Castle, wrecked at Kure Atoll in 1872 (Photo courtesy of San Francisco History Center, San Francisco Public Library)



Schooner Churchill, lost at French Frigate Shoals 1917 (Photo courtesy of Tall Ships of San Francisco)



Double hulled sailing canoe, Hokulea, sailing in the Papahānaumokuākea Marine National Monument (Photo courtesy of Na'alehu Anthony)

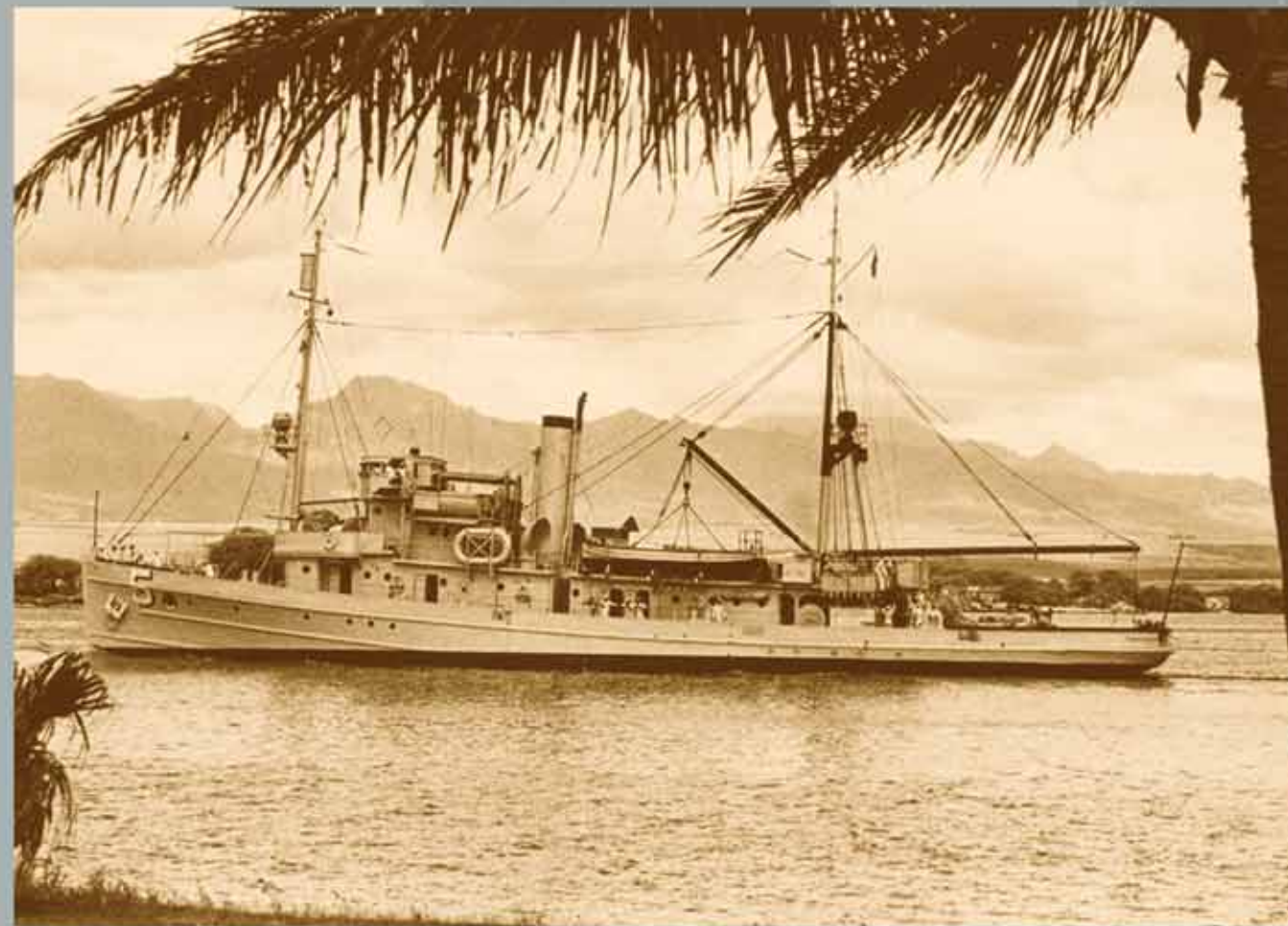
www.papahanaumokuakea.gov



Seafaring in the Papahānaumokuākea Marine National Monument



Whaling ship Daniel Wood, wrecked at French Frigate Shoals 1867 (Image courtesy of MIT)



U.S.S. Tanager (AM-5) at Pearl Harbor before sailing to the Northwestern Hawaiian Islands, 1920s (Photo courtesy of Bishop Museum)



Sailing vessel, Dunnottar Castle, wrecked at Kure Atoll in 1872 (Photo courtesy of San Francisco History Center, San Francisco Public Library)



Schooner Churchill, lost at French Frigate Shoals 1917 (Photo courtesy of Tall Ships of San Francisco)



Double hulled sailing canoe, Hokulea, sailing in the Papahanaumokuakea Marine National Monument (Photo courtesy of Na'alehu Anthony)

www.papahanaumokuakea.gov

