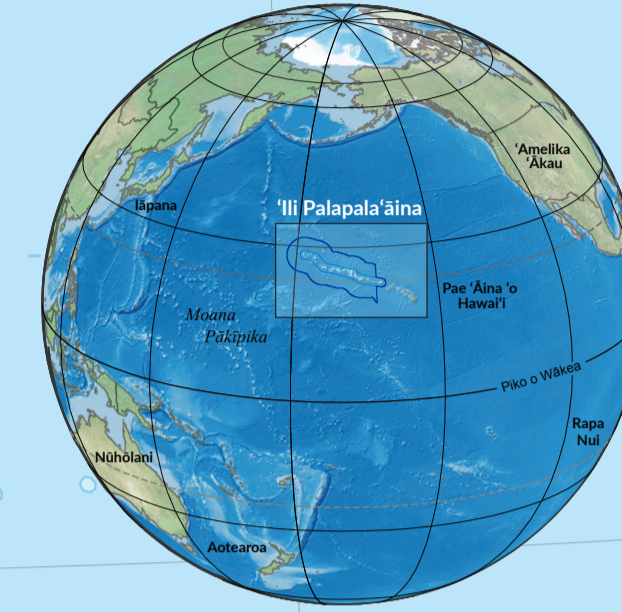


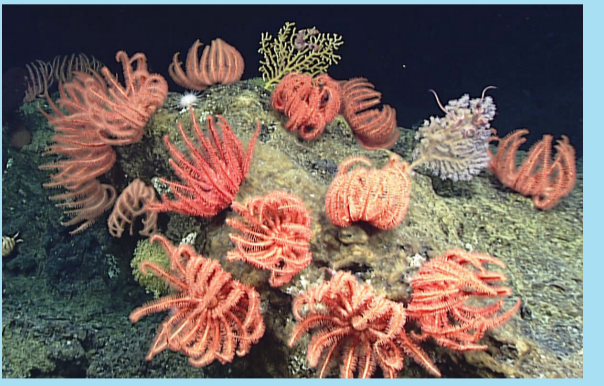
# Kiaho'omana'o Kai Aupuni 'o PAPAĀNAUMOKUĀKEA



Na Dan Clark/USFWS ke ki'i

## He 'Āina Ho'omalū Manu Kai

Aia i ke Kiaho'omana'o ma 'ō aku o ka 14 miliona manu kai o 23 lāhulu, pau pū me nā pū'ūo nui loa o ke ka'upu a me ka mōli. Aia i ke ki'i o luna ka manu 'āhiu kahiko loa i 'ike 'ia a puni ka honua – he mōli nō i kapa 'ia 'o Wisdom kona inoa! He 'elima ona makahiki i ka makahiki 1956 i ho'okau 'ia ai kona apo wāwae, he 36 a 'oi paha mōli keiki a Wisdom i ho'omoe ai.



Na NOAA/DER ke ki'i

## Nā Hī'ohia Hou

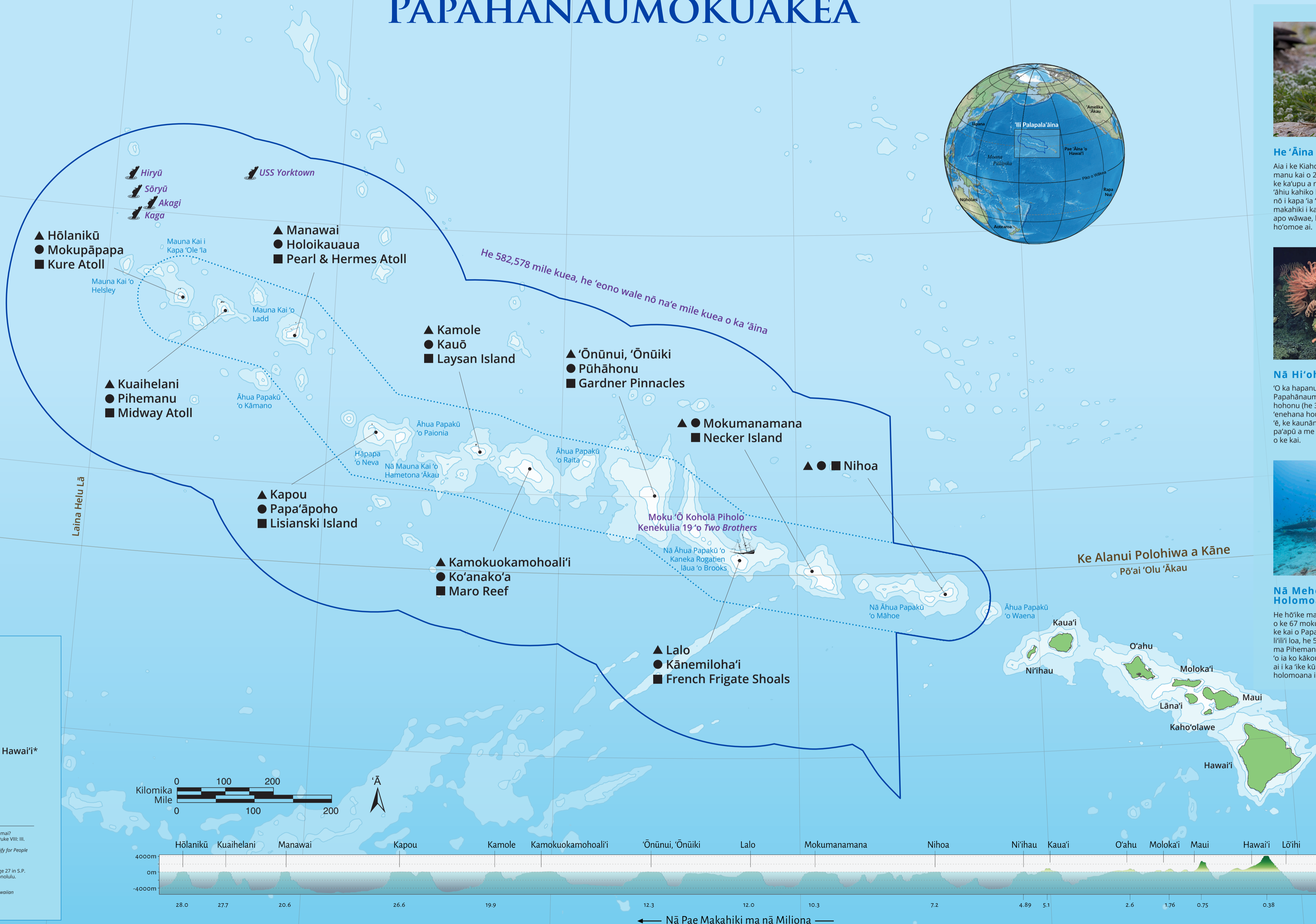
'O ka hapanui o ka papakū o ke kai ma Papahānaumokuākea, he 10,000 a 'oi kapua'i ka hohonu (he 3,000 mika). Ma ka ho'ohana 'ana i nā 'enehana hou e like me ke ka'a ho'oholo 'ia mai kahi 'e, ke kaurānā nei nā kānaka noi'i i nā kaiameaola pā'apū a me nā lāhulu kū kahi ma ia hohonu papakū o ke kai.



Na Tane Casserley/NOAA ke ki'i

## Nā Meheu o ko Kākou Wā Holomoana i Hala

He hō'ike mai ka noi'i palapala kahiko ē aia ma kahi o ke 67 moku piholo, 'o ka mua i ka makahiki 1818, i ke kai o Papahānaumokuākea. Aia nō ho'i, ma ka lili'i loa, he 503 wahi moku'elele, ua nui i lilo i ka Paio ma Pihemanu. Ke kū hō'ailona mai nei ia mau wahi 'o ia ko kākou ho'oilina holomoana, he puka e komo ai i ka 'ike kūhohonu hou aku no ko kākou wā holomoana i hala.



Na Nā'alehu Anthony ke ki'i

## He Mo'omeheu Ola

Wahi a nā mo'olelo kahiko, he wahi la'a 'o Papahānaumokuākea kahi i puka mua mai ai nā mea ola a pau, kahi ho'i e ho'i ai ka 'uhane ke hala ke kānaka.



Na Mark Sullivan/NOAA ke ki'i

## He Wahi Kanāho 'Āpa'akuma

Aia i ke Kiaho'omana'o nā lāhulu he nui no laila wale mai nō, 'a'ole no kekahi wahi 'ē aku o ka honua nei. He wahi 'ano nui nō ho'i no ka hānau 'ana o ka honu a me ka 'iloholokauaua.



Na Greg McFall/NOAA ke ki'i

## He Mau 'Āpapa Nui o nā Po'ii'a

Ho'omalū ke Kiaho'omana'o i nā 'āpapa he 3.5 miliona 'ēka kahi e ka'āluna nei ka manō a me nā 'i'a nui e like me ka ulua (ma ke ki'i nei).

..... Palena 'Āina Kumu  
 ————— Palena 'Āina i Ho'onui 'ia

▲ Nā Inoa Kū'auhau na Kai'aikawaha\*  
 (Nā Inoa Hawai'i Kahiko)

● Nā Inoa na ke Kōmike Lekikona 'Ōlelo Hawai'i\*  
 (Nā Inoa Hawai'i o kēia Wā)

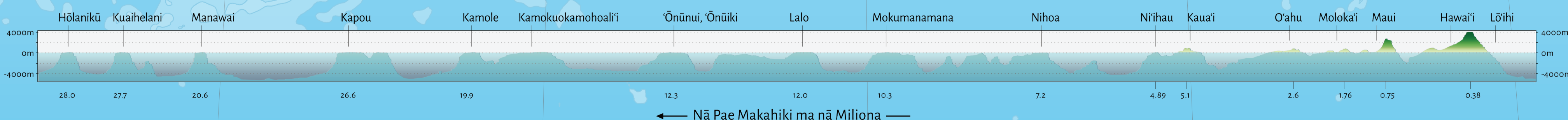
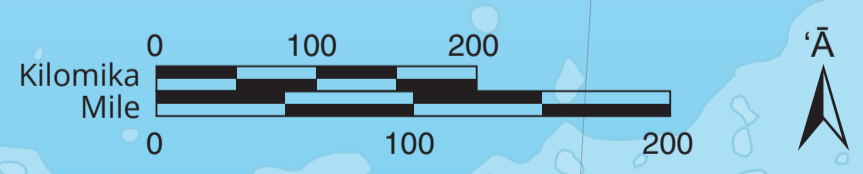
■ Nā Inoa Laulahā†  
 (Mai nā pakuhi holomoana o kēia au)

Papa Kūmole

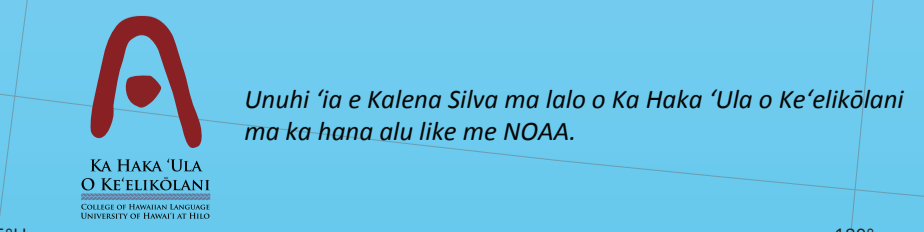
\*Nogelmeier, P. (1995, December). He mau inoa kahiko paha i nalo a hooe hou mai? (Ancient names that have disappeared and been recovered?). *Ko 'Āhō'i 'Ōlelo, Puke VIII: iii*. Kīkilo, Kekuewa. "Rebirth of an Archipelago: Sustaining a Hawaiian Cultural Identity for People and Homeland." Honolulu: Kamehameha Schools, 2010. Print.

\*Kimura, L.L. 1998. Hawaiian names for the Northwestern Hawaiian Islands. Page 27 in S.P. Juvik and J.O. Juvik (eds.), *Atlas of Hawaii*, 3rd ed. University of Hawaii Press, Honolulu.

†Rauzon, Mark J. 2001. *Isles of Refuge: Wildlife and History of the Northwestern Hawaiian Islands*. University of Hawaii Press, Honolulu.



Ke lana hele nei ka pae 'āina 'o Hawai'i i ke komohana 'ākau he 3.4 'Inia o ka makahiki.



He Wahi Waiwai Ho'oilina Honua

[www.papahanaumokuakea.gov](http://www.papahanaumokuakea.gov)

