



PAPA HĀNAUMOKUĀKEA
Marine National Monument

A World Heritage Site

NOAA ONMS Update

June 24 – September 15, 2017

Presented to the NWHI Coral Reef Ecosystem Reserve Advisory Council
Presented by: Athline Clark, NOAA Superintendent
October 12, 2017





AGENCY COORDINATION



NATIVE HAWAIIAN PLAN

KE ALA - PATHWAYS

KE ALA - PATHWAYS

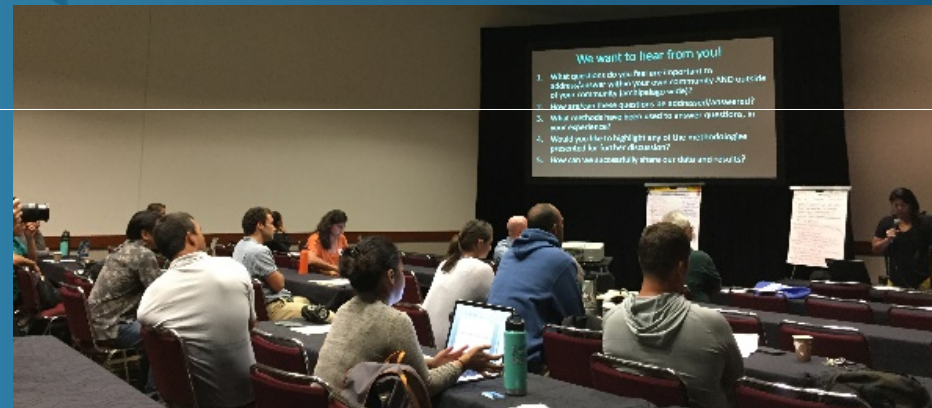
KŪKULU 1 - ACCESS	KŪKULU 2 - RESEARCH	KŪKULU 3 - INTEGRATION	KŪKULU 4 - PARTNERSHIPS	KŪKULU 5 - EDUCATION
<p>STRATEGY A-1 »</p> <p>Honor the ancestral connections between Native Hawaiians and Papahānaumokuākea through facilitated access and involvement.</p>	<p>STRATEGY R-1 »</p> <p>Conduct, support and facilitate research on Native Hawaiian cultural heritage of Papahānaumokuākea.</p>	<p>STRATEGY I-1 »</p> <p>Increase cultural capacity and proficiency of MMB agencies and permitted personnel.</p>	<p>STRATEGY P-1 »</p> <p>Engage and consult with the Native Hawaiian community.</p>	<p>STRATEGY E-1 »</p> <p>Develop and implement a PMNM-focused, culture-based education strategy for the Native Hawaiian community.</p>
<p>STRATEGY A-2 »</p> <p>Support the perpetuation and revitalization of Native Hawaiian culture and the use of traditional knowledge, innovations and practices of indigenous Hawaiian people within Papahānaumokuākea.</p>	<p>STRATEGY R-2 »</p> <p>Conduct, support and facilitate cultural heritage research access.</p>	<p>STRATEGY I-2 »</p> <p>Develop culturally appropriate policies and programs for Monument management.</p>	<p>STRATEGY P-2 »</p> <p>Support a vibrant sustainable Native Hawaiian Cultural Working Group partnership and effectively integrate the CWG into Monument management.</p>	<p>STRATEGY E-2 »</p> <p>Strengthen cultural education initiatives through integration of Native Hawaiian values and concepts.</p>
<p>STRATEGY A-3 »</p> <p>Protect, preserve, maintain and as appropriate restore natural and cultural resources while providing appropriate management access and use.</p>	<p>STRATEGY R-3 »</p> <p>Conduct, support and facilitate integrated research activities.</p>	<p>STRATEGY I-3 »</p> <p>Integrate traditional knowledge, practices, principles and concepts into all areas of Monument management and activities.</p>	<p>STRATEGY P-3 »</p> <p>Develop collaborative partnerships to support PMNM programs and initiatives.</p>	<p>STRATEGY E-3 »</p> <p>Exhibit leadership through strategic initiatives that focus on generational capacity building throughout Hawai'i.</p>
<p>STRATEGY A-4 »</p> <p>Broaden and deepen the cultural and spiritual knowledge and understanding about Papahānaumokuākea through experiential learning.</p>	<p>STRATEGY R-4 »</p> <p>Periodically identify the research priorities of the Native Hawaiian community.</p>	<p>STRATEGY I-4 »</p> <p>Manage data gathered within Papahānaumokuākea.</p>	<p>STRATEGY P-4 »</p> <p>Develop and strengthen partnerships to foster broad-based support from the general public (local, regional, international).</p>	<p>STRATEGY E-4 »</p> <p>Develop and implement tools, technologies and products to support PMNM programs and initiatives.</p>



CONSTITUENCY BUILDING & OUTREACH



PMNM Attends the 2017 'Opihi Partnership Summit



Top Above: Presentation on work being done in Hawai'i intertidal areas

Bottom Above: Community member discusses the role of overharvesting in the lack of nearshore resources.

(Credits: Jason Leonard/NOAA)

PMNM Staff Presents at Nā Kama Kai Ocean Safety & Conservation Clinics

Nā Kama Kai participants pretend to be Hawaiian Monk Seals entangled in marine debris.

(Credit: Kainoa Kaulukukui-Narikawa/NOAA)



PMNM Participates in 24th Annual Hawai'i Conservation Conference



Top Left: PMNM staff hosted a Communications Training Workshop entitled “What’s Your Punchline? How to Make Your Message Resonate with Different Audiences.” Breakout groups work on the activity. Bottom Left: NOAA-themed booth was featured with HIHWNMS and the Office of Coastal Management Visitors explore the virtual sandbox. Above: PMNM hosted a forum “Large-Scale Progression of Co-Management and Cultural Integration.”

(Credits: Top Left Kainoa Kaulukukui-Narikawa/NOAA, Bottom Left Kahi Fujii/NOAA, Above Kaipo Kiaha/OHA)

Mokupāpapa Hosts ONMS's 3rd Annual "Get Into Your Sanctuary Day" Event



From Left: Americorps intern Gina plays Sanctuary Search with visitors; MDC staffer Clayton facilitates a canoe race; MDV volunteer Katie times guests as they pick nurdles out of sand (Credits: Toni Parras/NOAA)

NOAA Senior Leadership and Congressional staff members from the U.S. House and Senate Visit NOAA's Inouye Regional Center and Mokupāpapa Discovery Center



ONMS, PMNM and Congressional staff pose together at the Polynesian Voyaging Exhibit. (Photo: Virginia Branco/NOAA)

PMNM Wins Global Ocean Refuge Award



PMNM Native Hawaiian Specialist Kalani Quiokocho accepts the Global Ocean Refuge Award on behalf of PMNM. (Credits: Russell Moffitt/Marine Conservation Institute)



EDUCATION



PMNM Presents Albatross and Marine Debris Lessons at 'Iolani Middle School



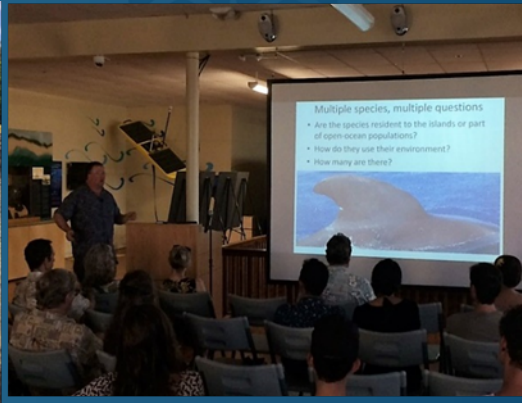
Left: USFWS Education and Outreach Specialist Amy Olliffe teaches students about being an albatross monitor on Midway Atoll. Right: 'Iolani Middle School students investigate the natural and man-made materials found inside an albatross bolus. (Credits: Andy Collins/NOAA)



MOKUPĀPAPA DISCOVERY CENTER HIGHLIGHTS



Mokupāpapa Discovery Center



Left: Hawai'i Community College Intensive English Program students explore the tide pool environment. Center: Dr. Robin Baird shares his latest research. (Credits: Justin Umholtz/NOAA) Right: Ho'olauna students oli (chant) to open the ho'ike.



Mokupāpapa Hosts National Association of Interpreters Training for ONMS Staff

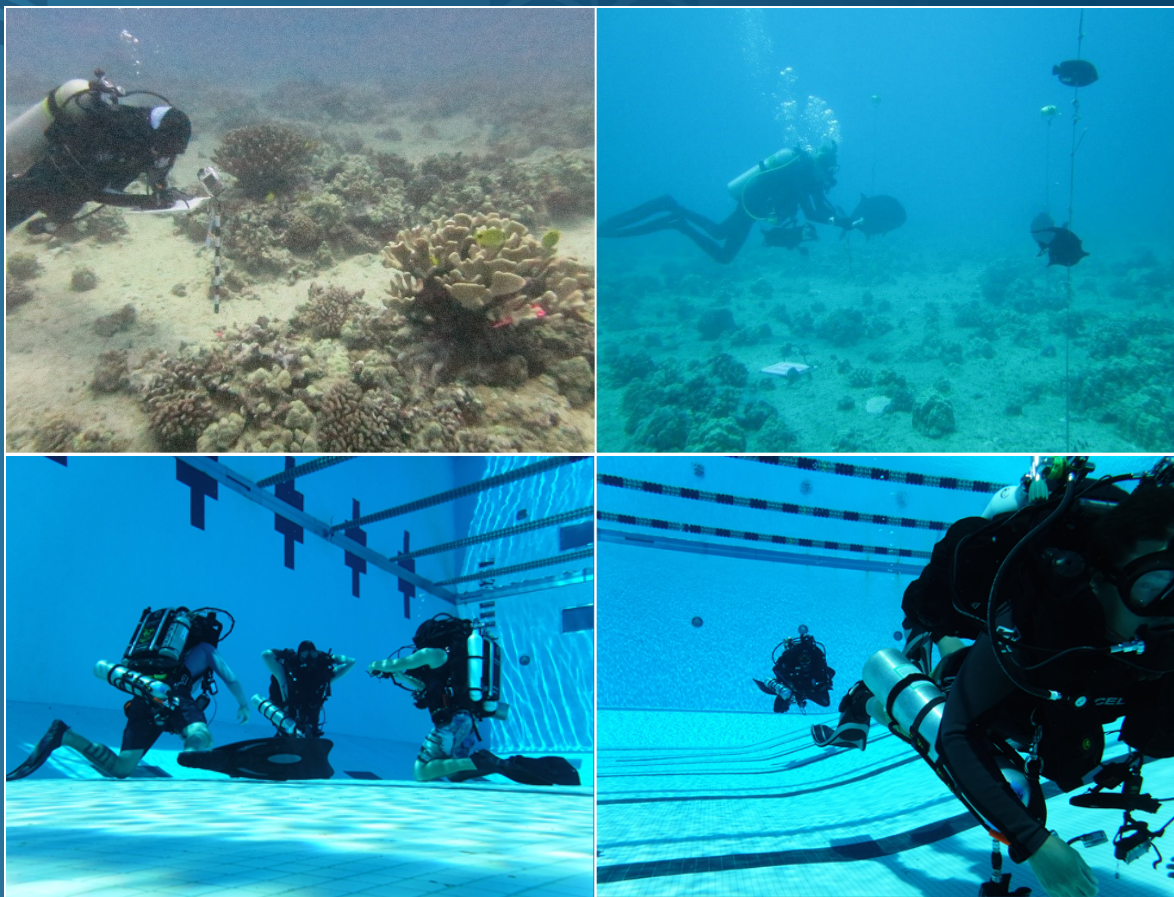
ONMS Pacific Region staff attend the NAI CIG and NNOCCI training in Hilo, HI. (Credit: Simone Mortan/Monterey Bay Aquarium)



FIELD & RESEARCH

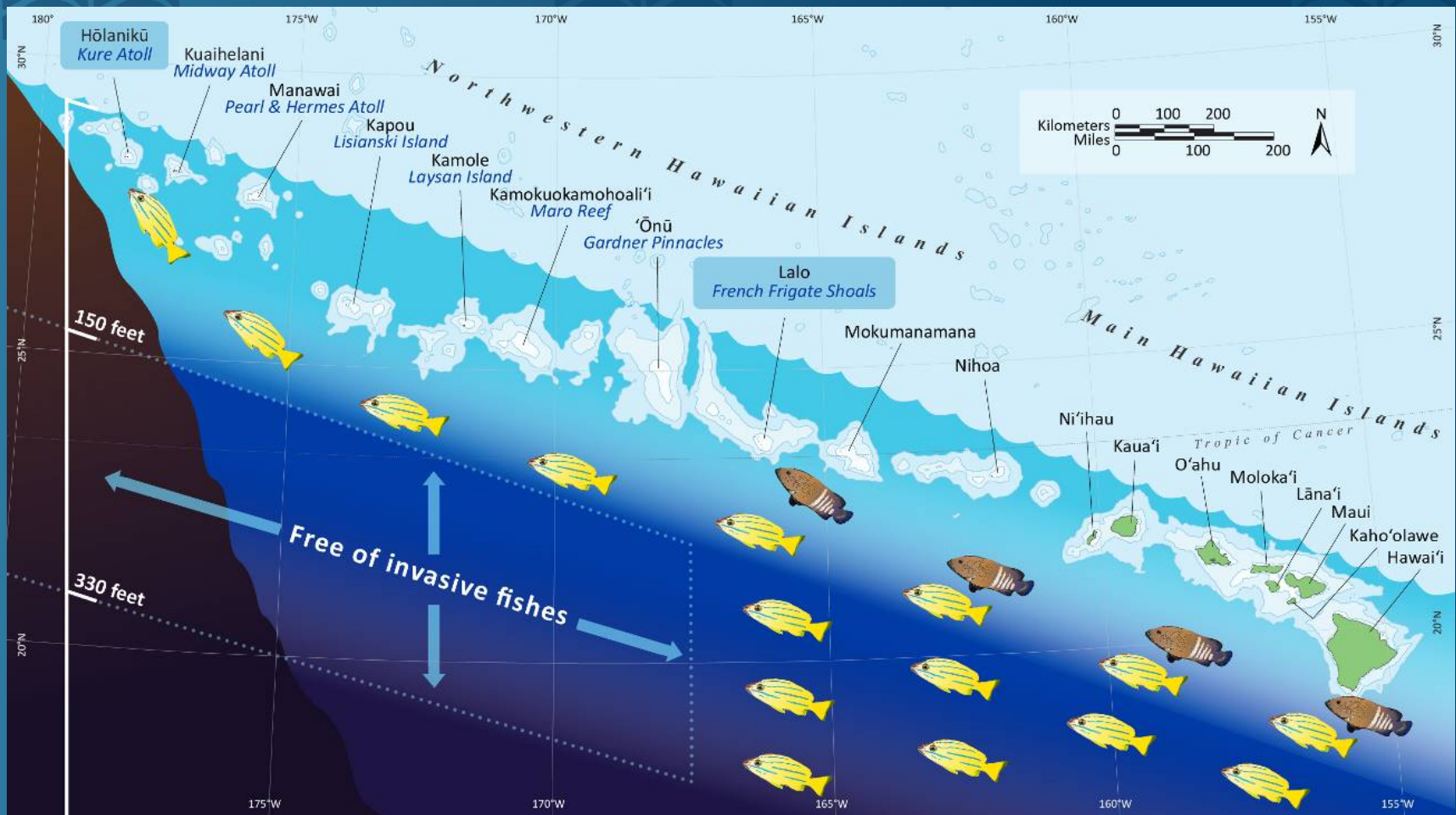


PMNM Trains the Next Generation of Researchers and PMNM Dive Team Conducts Training on Closed Circuit Rebreathers



Clockwise from top left: Atsuko Fukunaga, JIMAR/PMNM Ecological Research Statistician and Chief Scientist for the RAMP cruise, hones her skills on conducting state-of-the-art 3-D photogrammetry benthic surveys; An intern diver calibrates his fish sizing by utilizing fish models; Instructor leads PMNM divers Brian Hauk and Stephen Matadobra in an emergency scenario drill; PMNM divers Jason Leonard and Atsuko Fukunaga test the trim on their new dive units. (Credits: Stephen Matadobra/NOAA, Jacob Asher/NOAA, Keo Lopes/NOAA)

PMNM Scientists Discover Large Refuge from Invasive Species in the NWHI



Map of the Hawaiian Archipelago, showing the distribution of invasive bluestriped snappers and peacock groupers on shallow and deep reefs, respectively. Note that large areas of PMNM are free of these introduced invasive species. (Graphic: Kahi Fujii/NOAA)

Staff Changes:

New Hires: Naomi McIntosh, Senior Adviser
Jon Martinez, Research Specialist

Departures: Kainoa Kaulukukui-Narikawa, Education Specialist

Calendar:

SOEST Open House

October 20, 2017 (Friday) 8:30 AM - 2:00 PM

October 21, 2017 (Saturday) 10:00 AM - 2:00 PM

Free UH Manoa campus in the HIG, POST, and MSB buildings

Heads Up:

Papahānaumokuākea will be featured in a UNESCO exposition on World Heritage coral reefs at the Aquarium of Paris from 1 October until the end of the year

Mahalo!

