



PAPA HĀNAUMOKUĀKEA
Marine National Monument

A World Heritage Site

RAC 2021 Cruise Update

Presented By:

Brian Hauk (JIMAR Resource Protection Specialist for PMNM)

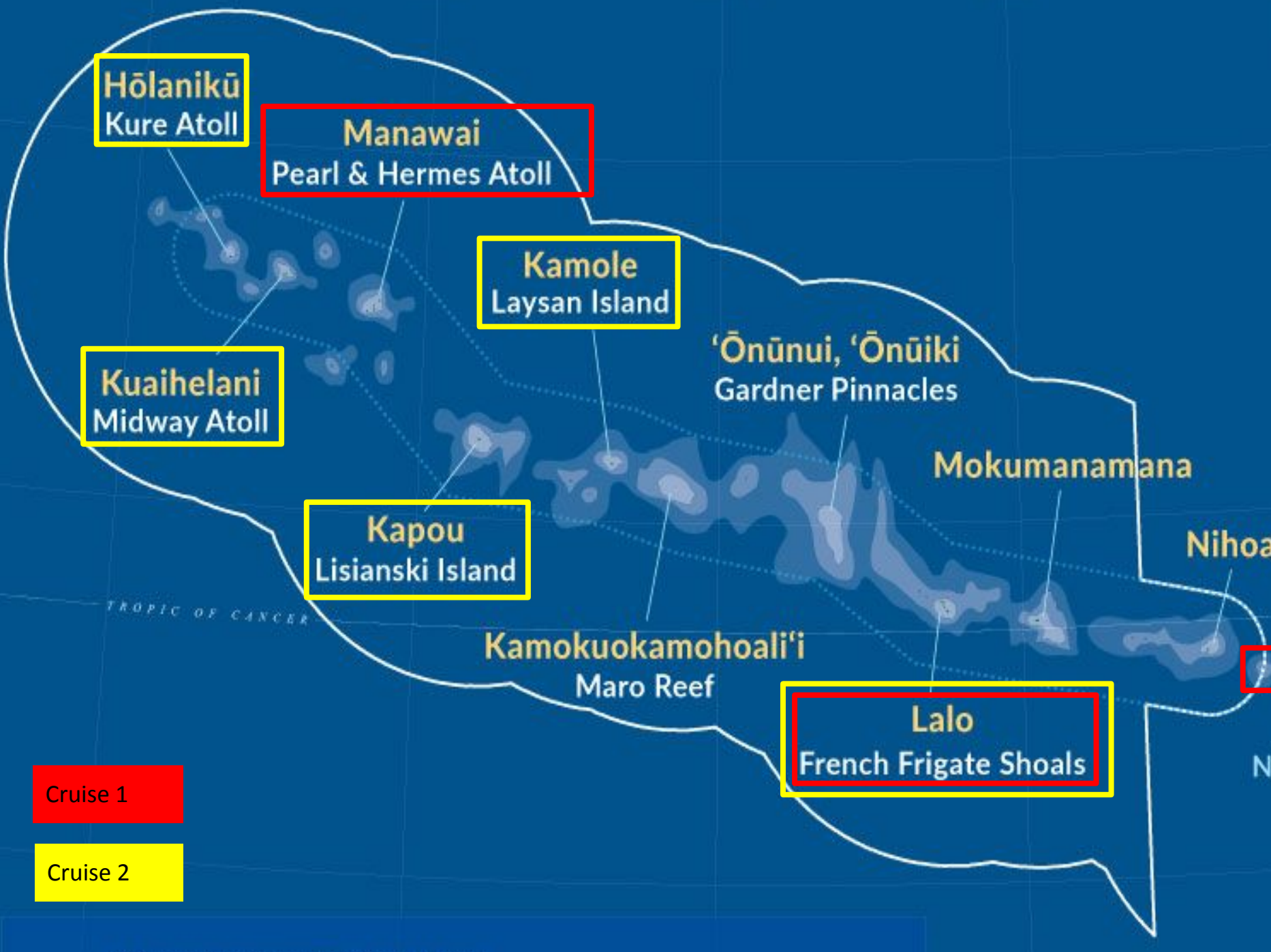
Brian.hauk@noaa.gov

&

Jason Leonard (PMNM Field Coordinator)

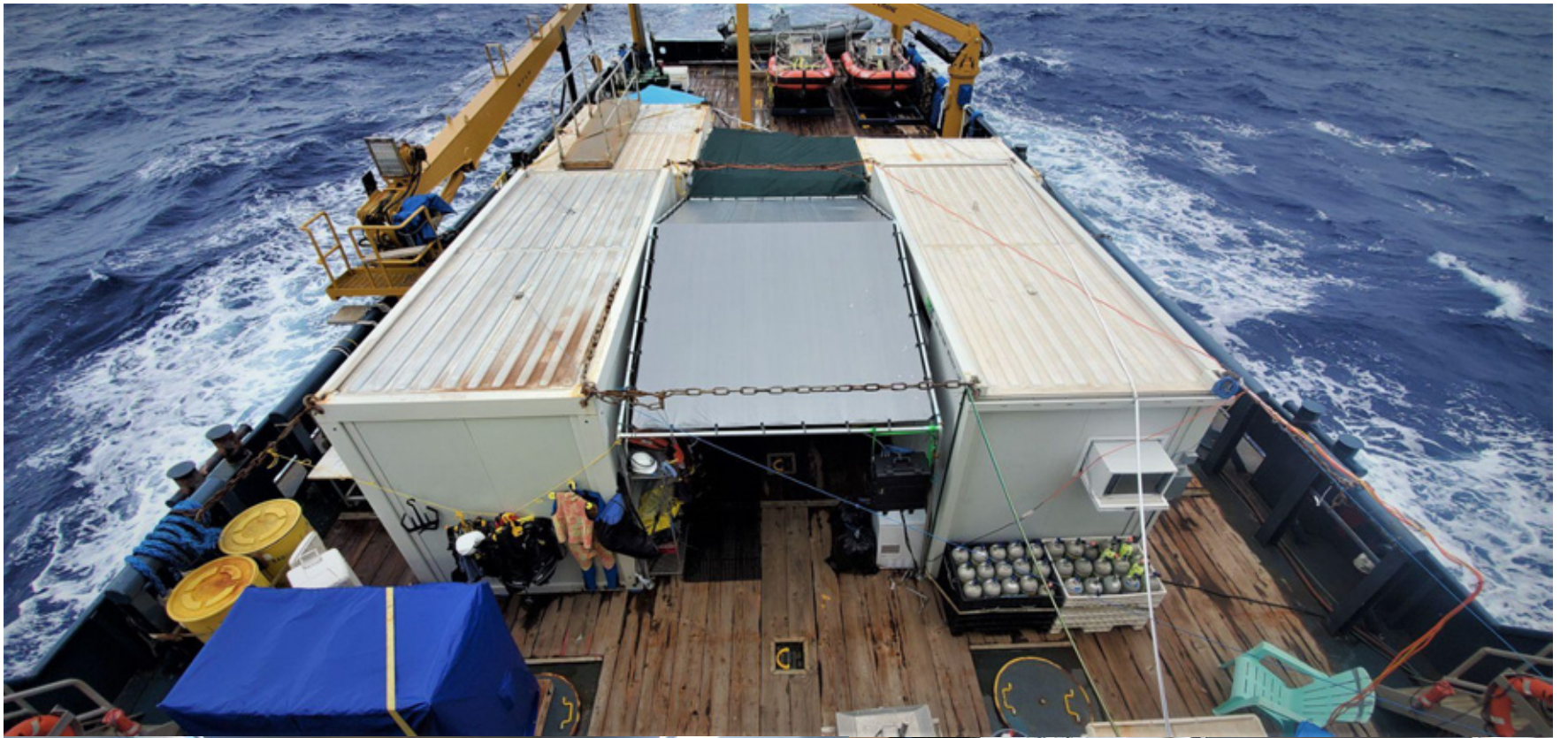
Jason.leonard@noaa.gov











SURTASS





Pearl and Hermes - Sincerity Ace Site









Update on *Chondria tumulosa*



Mystery Alga-Historical Presence ~ 2015-16

- Tow
 - Large numbers of *Caranx ignobilis* were observed along the south side of the atoll.
 - Dense algal cover (primarily *Microdictyon* sp.) was observed in many areas around the atoll.
 - Dense mats and floating “rafts” of a red alga (tentatively identified as a *Laurencia* sp.) were observed on the reef on the north-northeast side of the atoll and at the ARMS site on the southwest corner (PHR-54). This alga was not observed in other areas. Samples were collected for positive ID and further study.

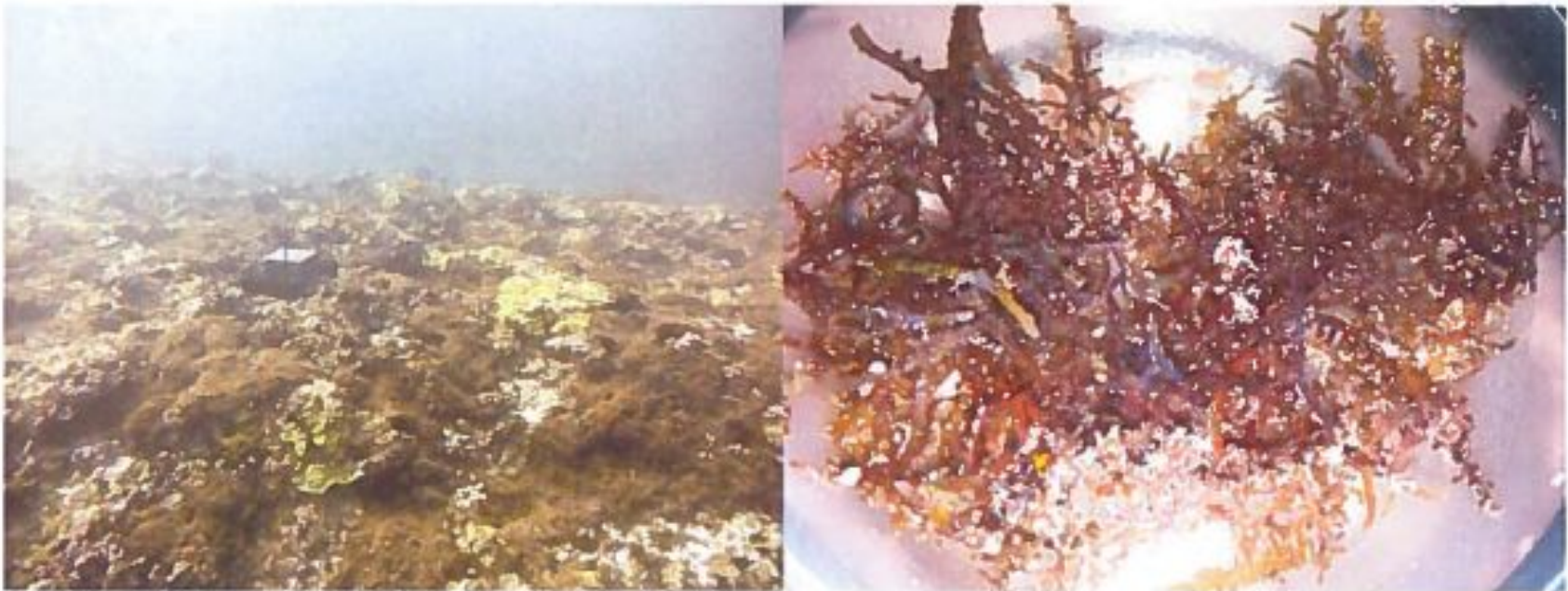
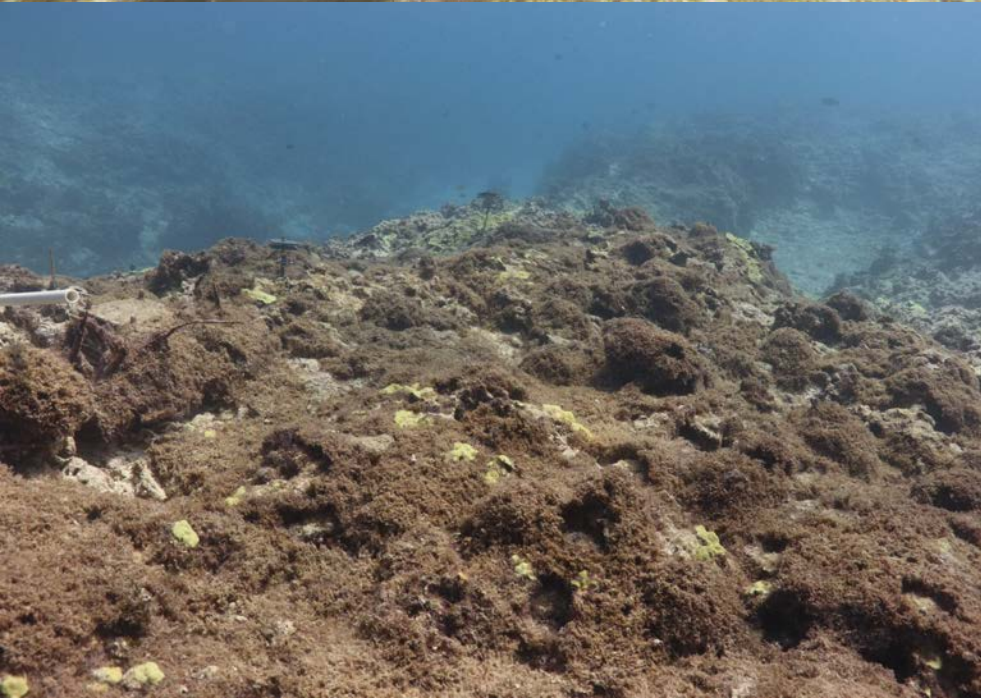
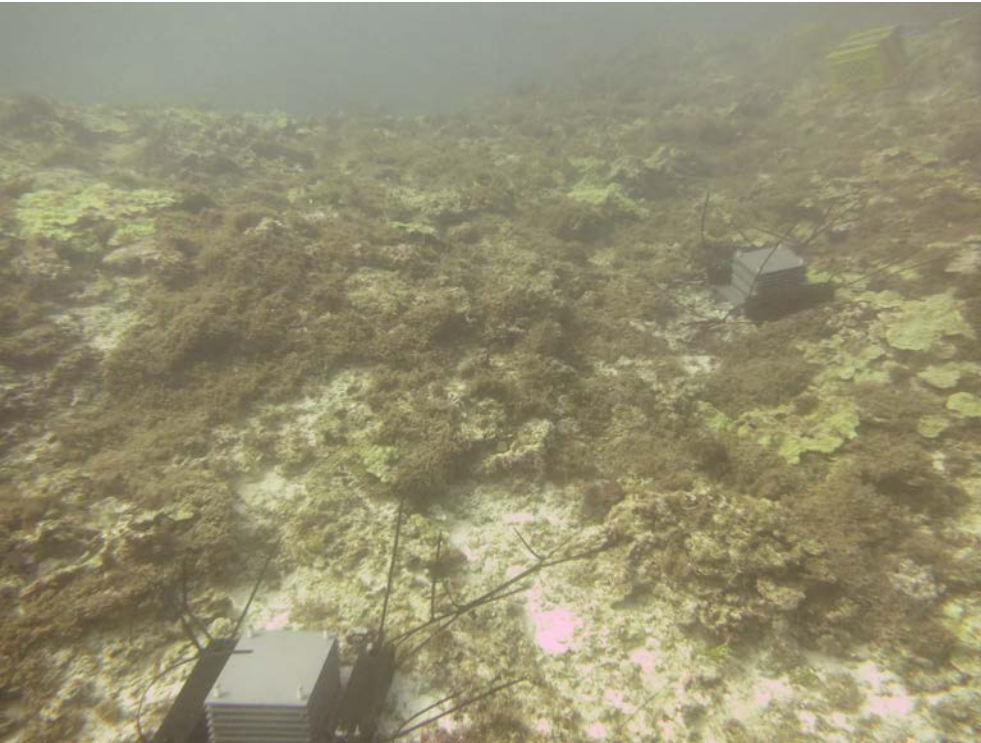
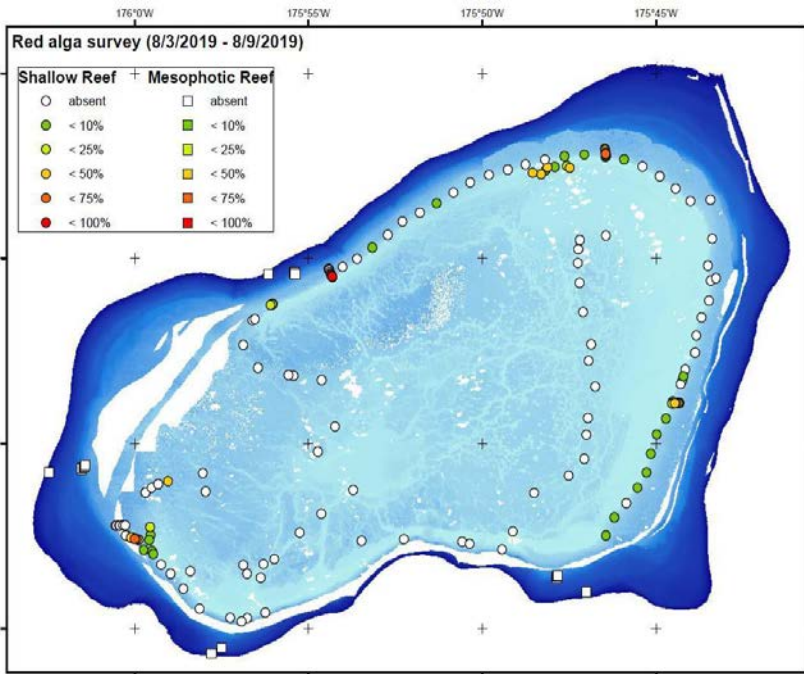


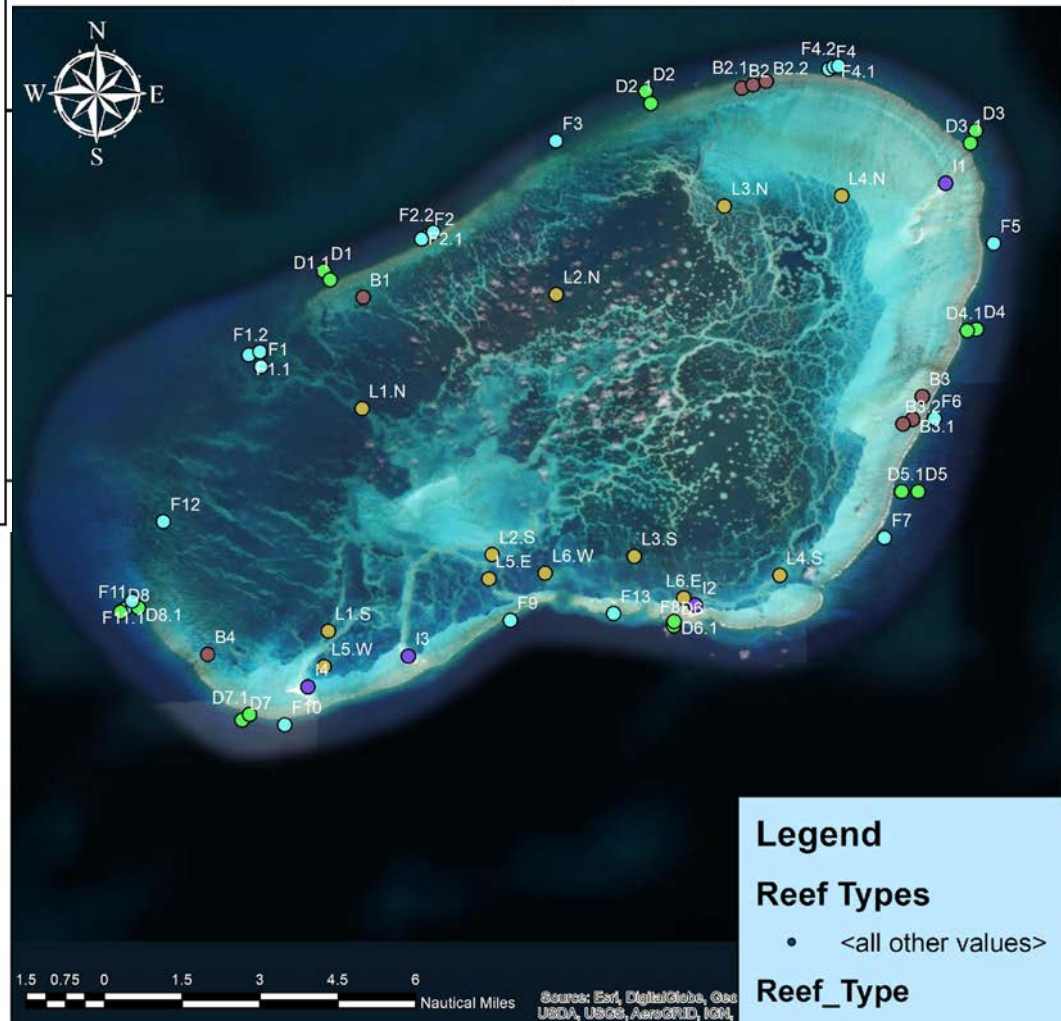
Figure 3.--Left – Dense mats of red algae at the ARMS site (PHR-54) on southwest side of Pearl and Hermes Atoll Photo by Kerry Reardon. Right – Close up view of algae in the lab. Photo by Louise Giuseffi (right).





Manawai

Chondria Survey Sites_2021



Legend

Reef Types

- <all other values>

Reef_Type

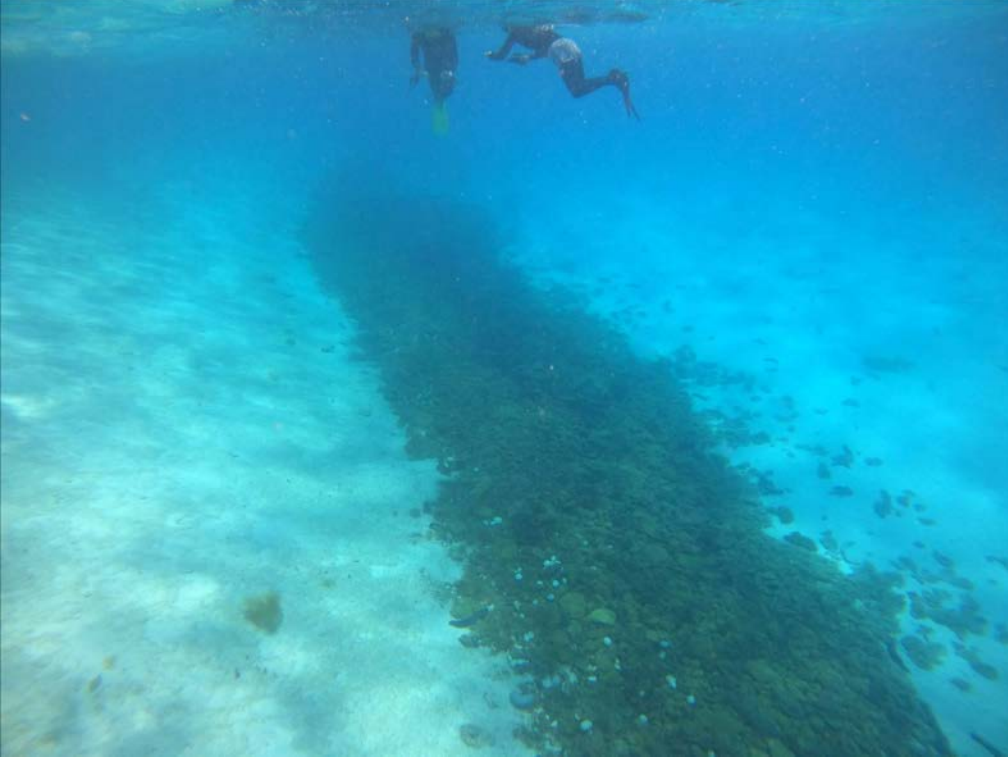
- B
- D
- F
- I
- L

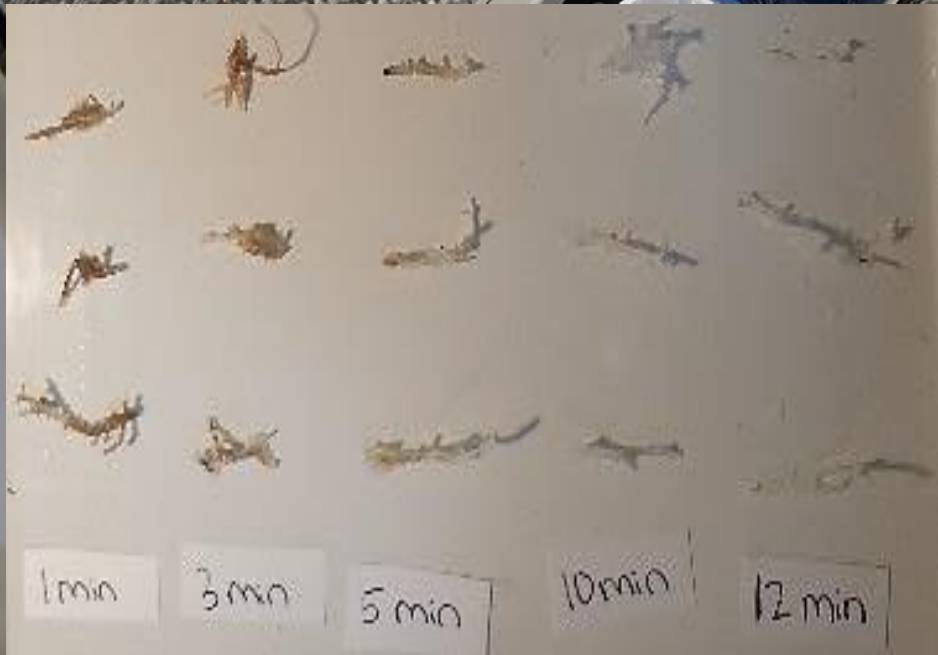






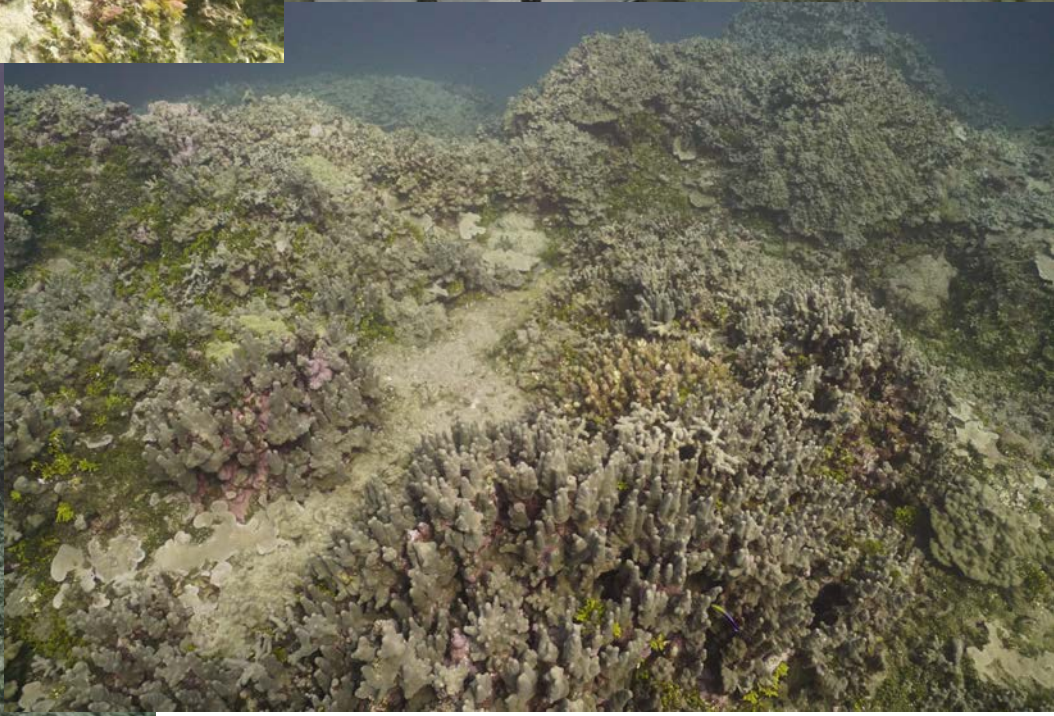
Chondria Highway

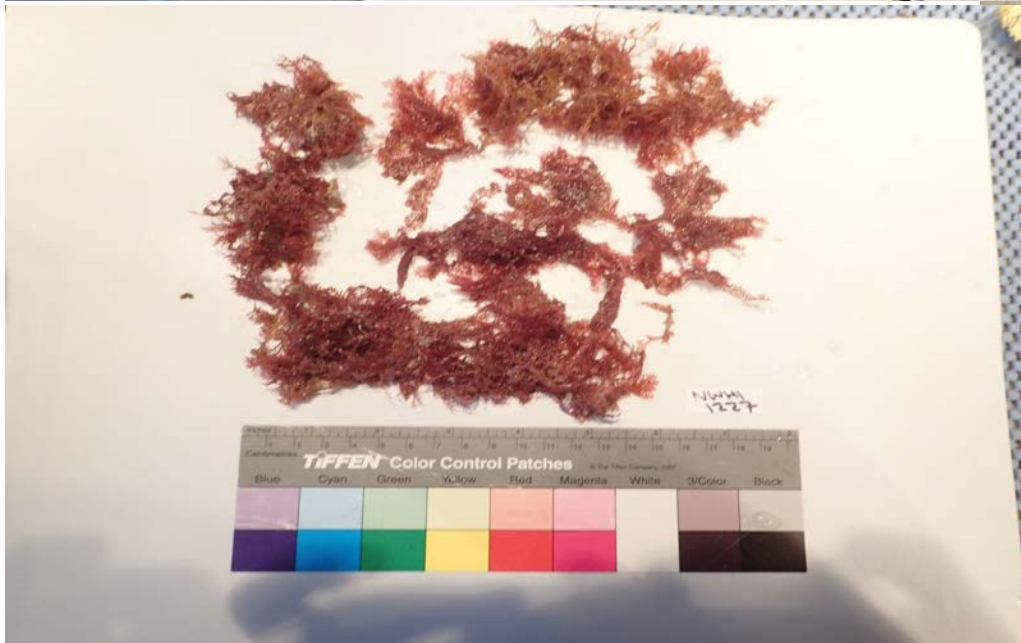




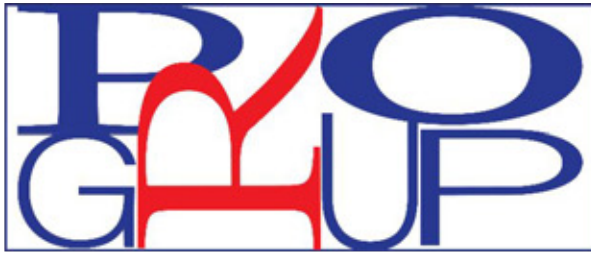




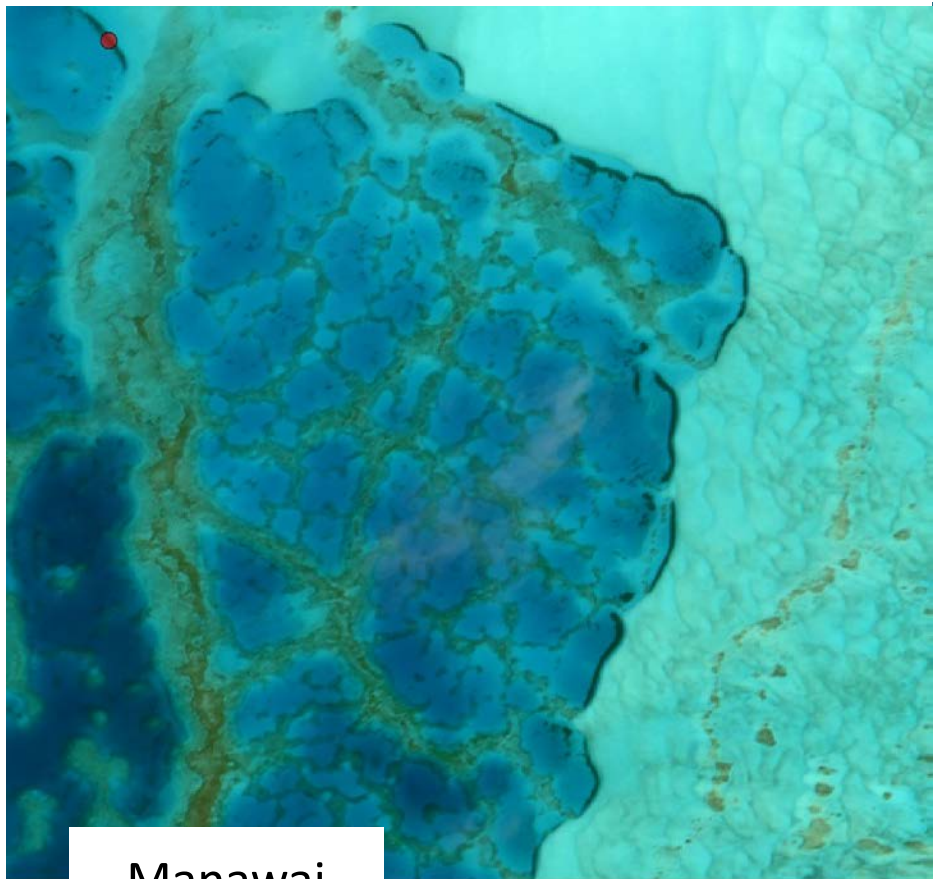




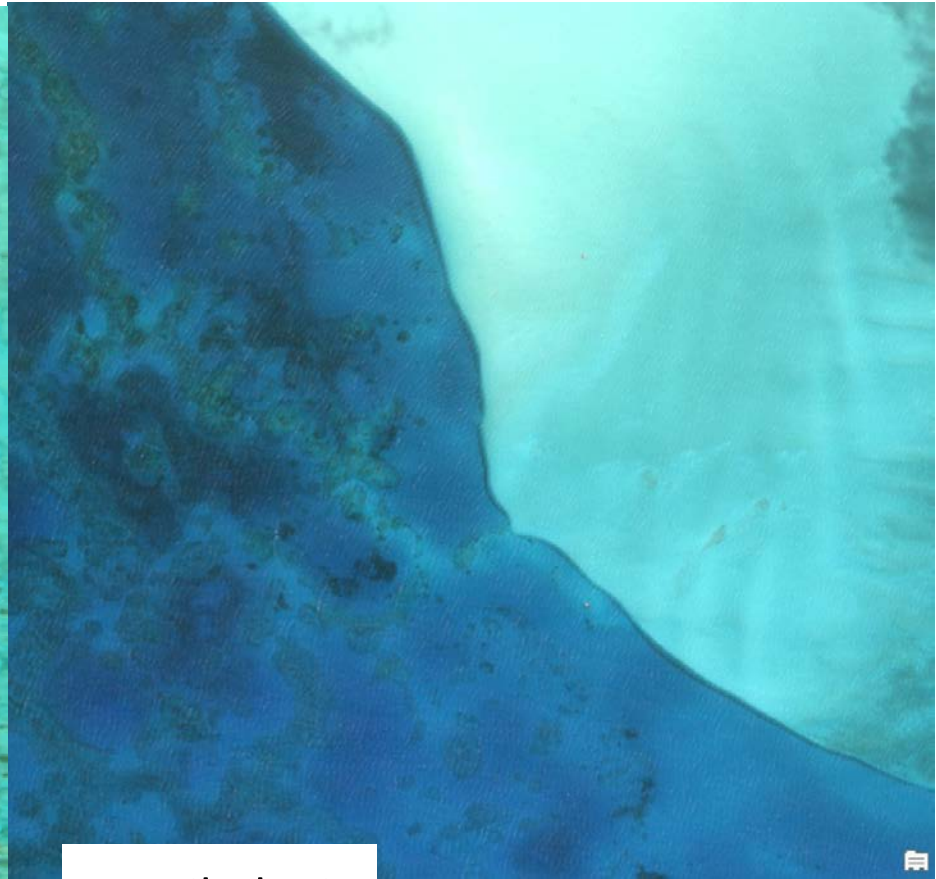




PAPA HĀNAUMOKU ĀKEA
Remote Observation Group

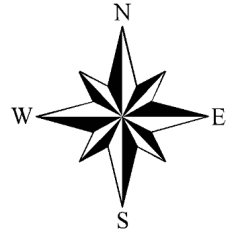


Manawai



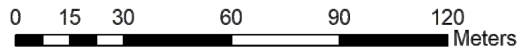
Kuaihelani

East Island UAS Biological Survey July 11, 2021

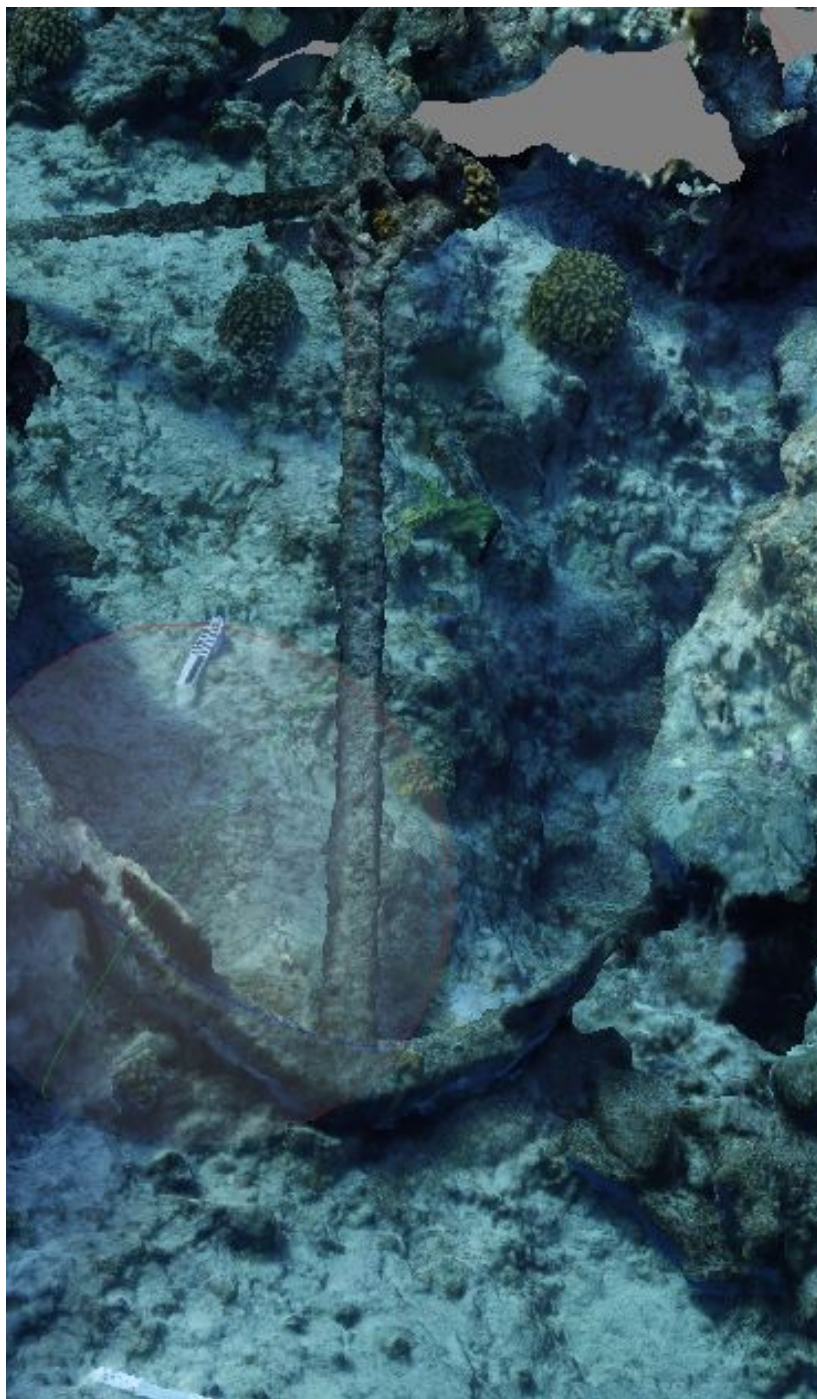


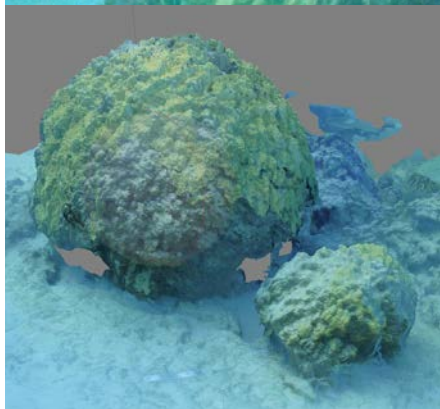
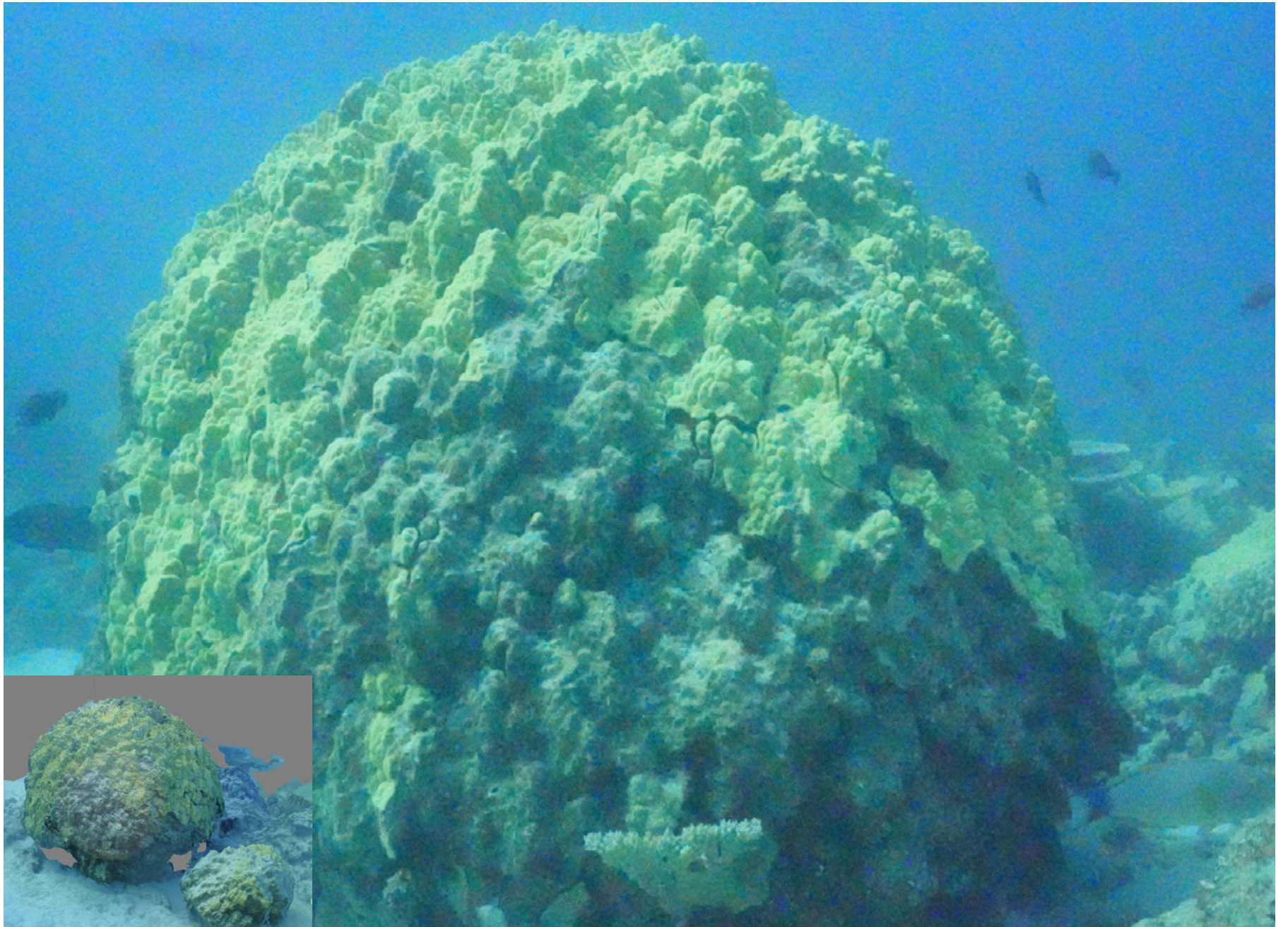
Legend

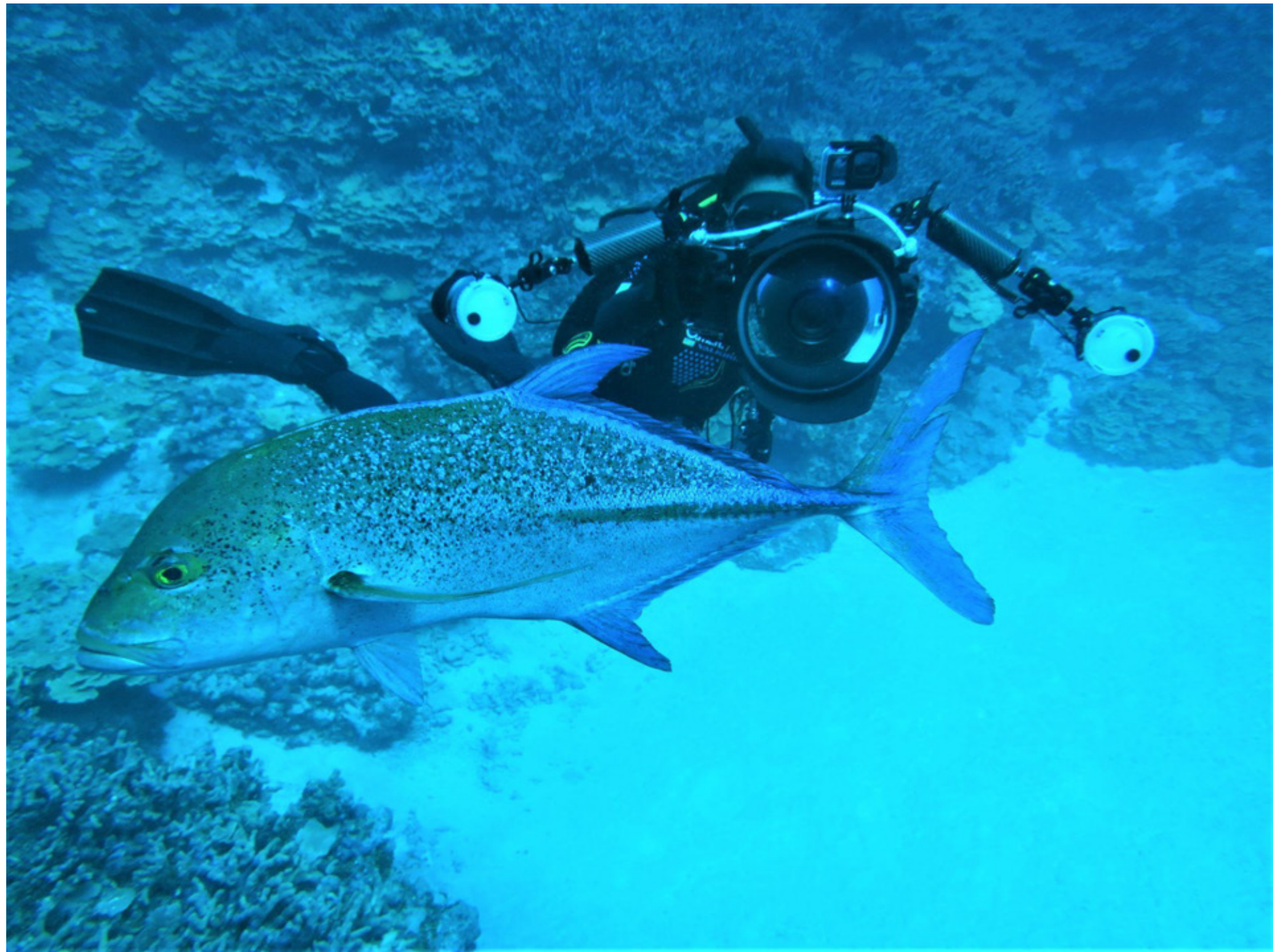
- Turtles
- Turtle_Nest
- Seal





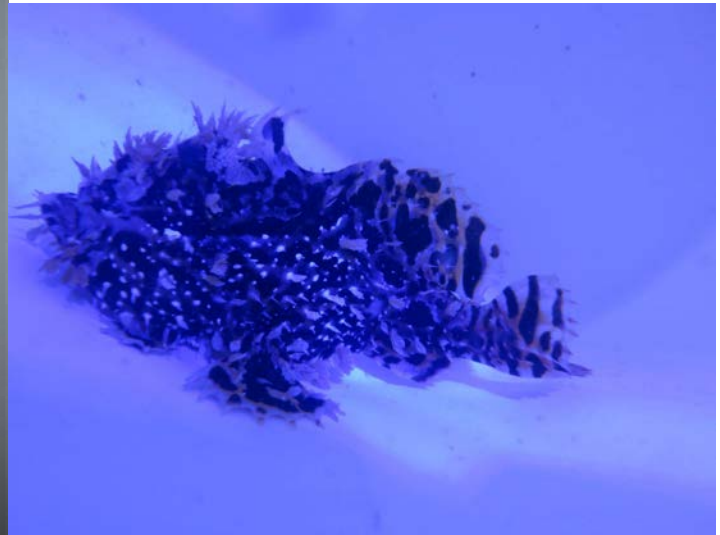














Mahalo!

QUESTIONS?

- Brian.hauk@noaa.gov
- Jason.leonard@noaa.gov

