



PAPA HĀNAUMOKUĀKEA
Marine National Monument

A World Heritage Site

NOAA ONMS Update

June 30, 2021 - September 21, 2021

Presented to the NWHI Coral Reef Ecosystem Reserve Advisory Council
Presented by: Athline Clark, NOAA Superintendent
September 22, 2021



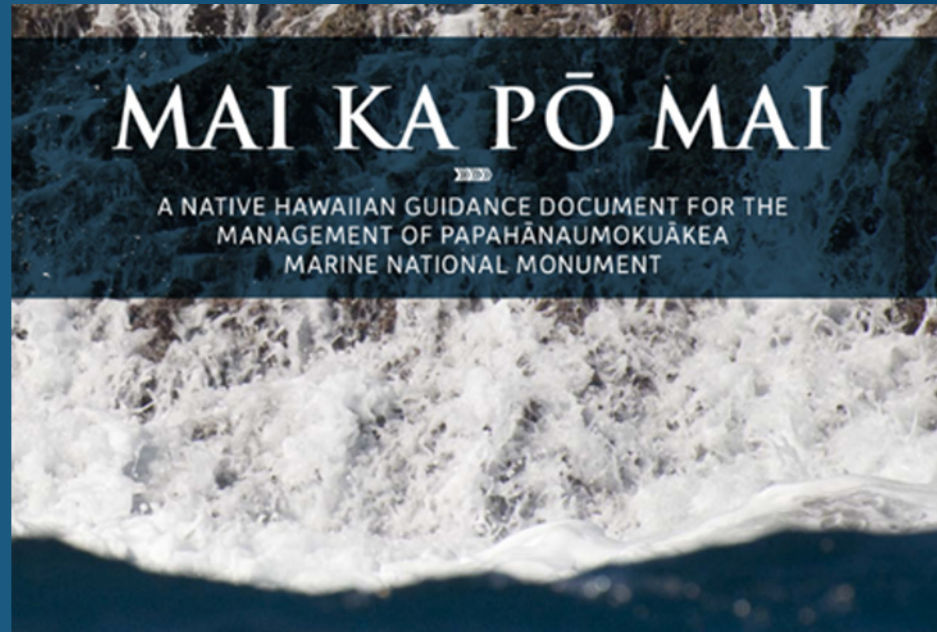


Agency Coordination



Mai Ka Pō Mai: Integrating Hawaiian Culture into the Management of PMNM

To read and download Mai Ka Pō Mai visit: www.oha.org/maikapomai
Mai Ka Pō Mai Webinar: [Mai Ka Pō Mai Webinar](https://vimeo.com/569132041)
(<https://vimeo.com/569132041>)






PMNM presents on NMS Designation at RMFC Meeting

As part of this pre-scoping visit, information was provided on the potential benefits of a sanctuary designation, the anticipated timeline, NMSA 304(a)(5) process, and PMNM's desire to work closely with the RMFC during the designation process.

Voices of Papahānaumokuākea: Preserving the Genealogy and Stories of PMNM

**VOICES OF
PAPAHĀNAUMOKUĀKEA**

TUNE IN!

 Saturday, 7/10 6 pm	 Sunday, 7/11 3 pm	 Monday, 7/12 7 pm
---	---	--

The “Voices of Papahānaumokuākea” (l-r, top-bottom): Isaac “Paka” Harp, ‘Aulani Wilhelm, Kekuewa Kikiloī, Moani Pai, William Ailā, Nai‘a Lewis, Keoni Kuoha, and Pelika Andrade.

Visit the link to watch:

<https://www.oha.org/voices-of-papahanaumokuakea/>

NMSF Blue Beach Sheds Lights on PMNM's 15th Anniversary



To view the Facebook Live recording visit:

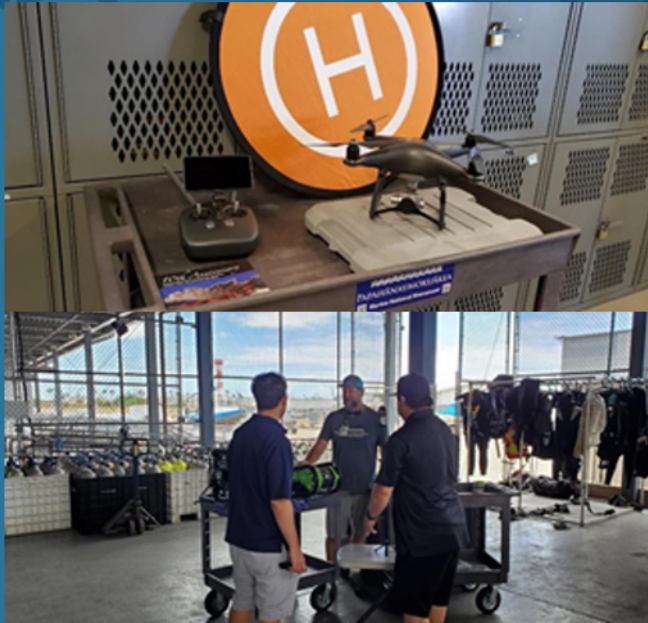
<https://marinesanctuary.org/event/blue-beacon-series-big-ocean-protection/>



Constituency Building and Outreach



PMNM Field Team Assist Hollings Scholar with Education & Outreach Project



Top: PMNM Field Logistics Technician Keo Lopes drone display that he shared about UAS work he is doing for PMNM. (Photo: J. Leonard). Bottom: PMNM Resource Protection Specialist Brian Hauk talks about the Aquatic Invasive Species Program and the team's ROV. (Photo: J. Leonard).



**ONMS welcomes Grau Fellow,
Kiloaulani Ka'awa Gonzales**

Voyaging Canoe Hōkūle‘a Sails to Nihoa Using Non-Traditional Navigation



Left: Hōkūle‘a and Hikianalia depart Honolulu Harbor (photo: Randy Kosaki/NOAA). Right: Nihoa Island through the forward mast shrouds of Hōkūle‘a (photo: Randy Kosaki/NOAA).

PMNM Presents on 15 Years of Accomplishments as a Marine National Monument



US/ICOMOS

**Celebrating 15 Years of
Cooperative Conservation:
Papahānaumokuākea World Heritage Site**

**Thursday
August 19, 2021
3 pm EDT / 9 am HST**

Free/Contribution Optional Webinar

**Featuring Athline Clark
and Kalani Quiocho**

As the only mixed World Heritage site in the U.S., the presentation focused on the criteria for designation as well as how the site incorporates nature and culture into all management strategies.

PMNM Scientist Participates in Panel Discussion on PMNM Research and Management

Research Coordinator, Randy Kosaki, gave a guest lecture to a cohort of new University of Hawai‘i Marine Biology graduate students. Followed by a panel discussion on “Co-Management in Papahānaumokuākea Marine National Monument” alongside Drs. Rob Toonen (HIMB) and Jeff Polovina (NMFS,retired)

Stories and Activities of Papahānaumokuākea


PAPAHĀNAUMOKUĀKEA
Marine National Monument

Stories and activities of Papahānaumokuākea 2020



Island of Mokumanamana from sea level. Photograph by Wayne Levin

Provides stakeholders with an annual overview of the projects permitted within PMNM and highlight key accomplishments from calendar year 2020.

Link to the [report](#) and [story map](#)



RESEARCH & FIELD OPERATIONS



PMNM Field Team Conducts Ocean Trials and Acoustic Mooring Recoveries



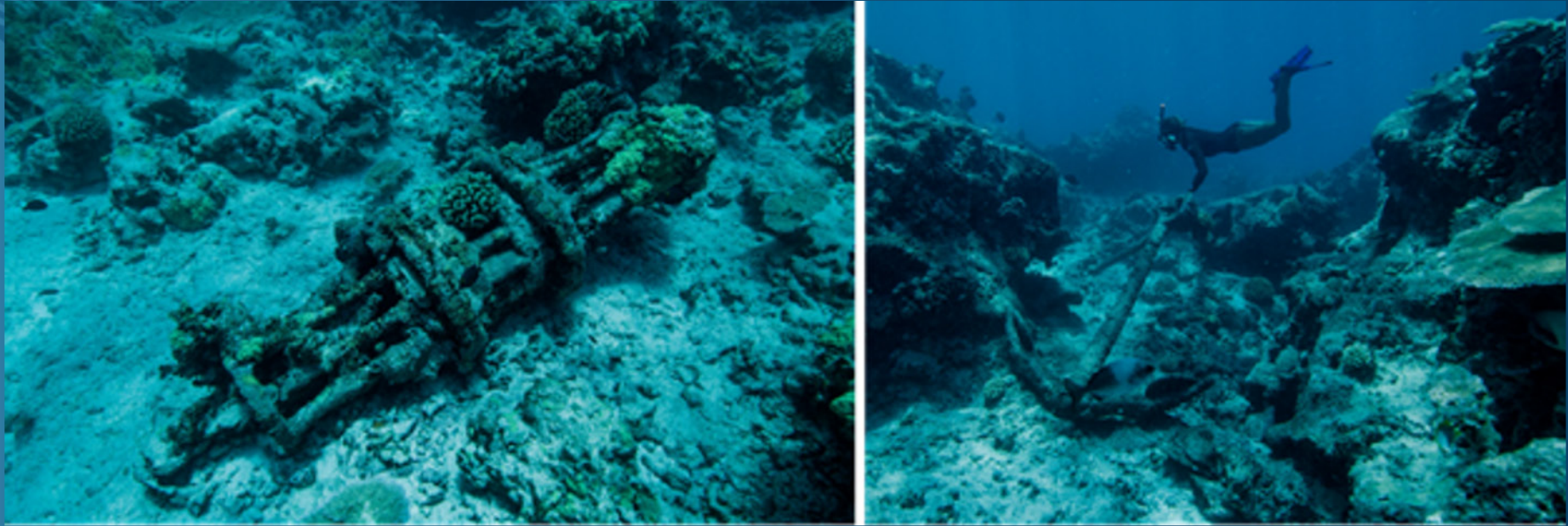
*Left: R3602 Hihimanu new engines being tested in less than optimal conditions. (Photo: J. Leonard).
Right: PMNM Field Logistics Technician Keo Lopes retrieves the buoy package. (Photo: J. Leonard)*

Post-Hurricane Coral Survival and Recovery Documented at Lalo (French Frigate Shoals)



*Left: Hurricane-damaged table Acropora corals. Largest dead colony is ~1.25 m in diameter.
Right: Post-hurricane Acropora coral recruit, ~ 8 cm in diameter.
Photos: Randy Kosaki/NOAA.*

1800s Shipwreck Discovered at Lalo



*Left: Anchor windlass at wreck site. Right: One of two anchors discovered.
Photos: Perrin James/Patagonia.*

Two New Species of Algae Described from 2018 *Hi'ialakai* Cruise

The full article, “Biodiversity of Hawaiian Peyssoneliales (Rhodophyta). 1. Two New Species in the Genus *Ramicrusta* from Lehua Island”, by A. Sherwood, M. Piano, R. Wade, F. Cabrera, H. Spalding, and R. Kosaki, is available [online](#).

Scientists Publish Description of a New Red Alga from the Deep Reefs of PMNM



Holotype specimen of the new species, Ethelia hawaiiensis, from Manawai (Pearl and Hermes Atoll), 75 m depth.

(Credit: Heather Spalding, College of Charleston).

Discovered by PMNM Resource Protection Specialist Brian Hauk on a NOAA ship *Hi 'ialakai* cruise in 2019.

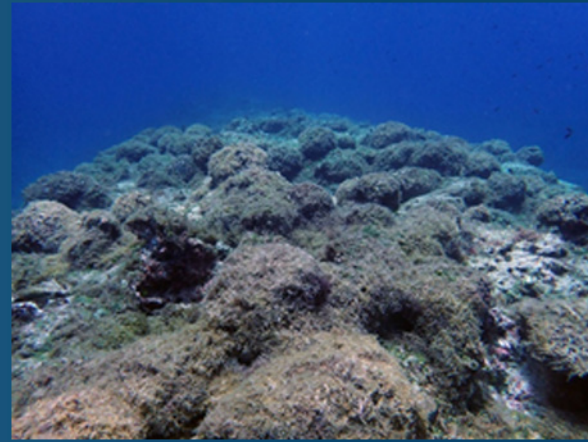
Paper published in the peer-reviewed journal *Pacific Science*, this issue was dedicated to the memory of Dr. Izzie Abbott

Abandoned Lifeboat Lands on remote PMNM atoll



Various photos of M/V SINCERITY ACE lifeboat and a second small boat found on the shoreline in PMNM (Credit: Brian Hauk, PMNM)

Researchers Return from Expedition with Report on PMNM Corals



Top Left: Scientist aboard PMNM Safeboat "Kaku" prepare for dive operations. (Photo: Heather Spalding). Top Right: Spur and groove coral reef habitat overgrown by Chondria (Photo: Heather Spalding) Bottom Left: Researchers on the last day of operations at Lalo (Photo: Dana_Imua). Bottom Right: Scientist Collecting Samples in the PMNM. (Photo: J. Leonard/NOAA).

PMNM Acquires New ROV to assist with Hull Inspections



Left: Permit Specialist Phillip Howard prepares to launch PMNM's new ROV (photo: Brian Hawk). (Right) Howard uses the ROV to investigate the Sette's bow thruster to assess hotspot areas for alien species prior to their entry to PMNM (photo: Brian Hawk)

Hawaiian Honu take on Climate Change: Signs of a Fragile Recovery



Despite access issues to Lalo due to Covid-19, Marylou Staman was able to share some post-Walaka data and observations. (Credit: Marylou Staman/NOAA)

ONMS “Get Into Your Sanctuary” Events



PMNM and Cordell Bank NMS Co-Host Get Into Your Sanctuary Event Featuring Seabirds and Author Book Reading

Author and artist Caren Loebel-Fried shares one of her many albatross studies while on Midway Atoll for her book “A Perfect Day for an Albatross.” (Photo: Dan Clark/USFWS)

Six National Marine Sanctuaries co-host Get Into Your Sanctuary Day Webinar featuring Banks and Seamounts in sanctuaries

This GIYS virtual offerings will be available on-demand and captioned in English and Spanish at <https://sanctuaries.noaa.gov/visit/giys.html>

Albatross Bolus Kits Keep Youth Campers Learning

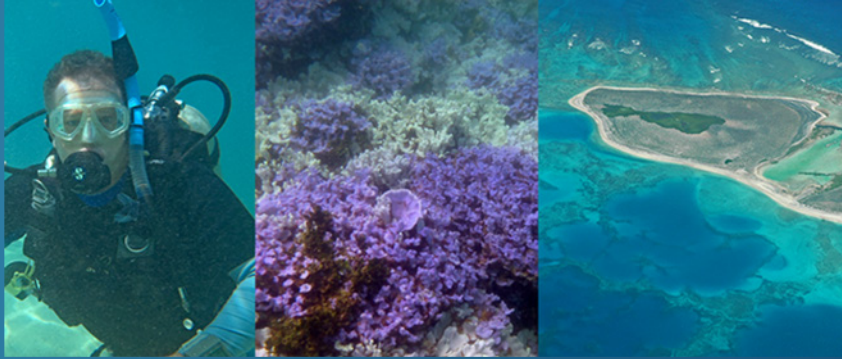


MDC Educator Justin Umholtz provides an immersive introduction to the PMNM before ISLE campers begin their bolus dissection in 2019. This year, ISLE leaders led the bolus dissection during their stay at Kīlauea Military Camp within Hawai‘i Volcanoes National Park. (Photo: ISLE)

PMNM Education Presentation to the Large Scale Marine Protected Areas Manager’s Summit

Two-day virtual summit held by the Big Ocean and the Blue Nature Alliance. PMNM Education Coordinator, Andy Collins, gave a presentation on education and outreach, what has worked for large scale and remote MPAs such as Papahānaumokuākea.

Third Thursday by the Bay Lecture Series



August 19: “Understanding the Impacts of Climate Change in Papahānaumokuākea”, Dr. Dan Polhemus, USFWS Pacific Islands Aquatic Ecosystems and Environmental Contaminants Program Manager

(Credits: Dan Polhemus/Courtney Couch/HIMB/NOAA)



September 16, 2021: “Nowhere to go? Ensuring the survival of endemic songbirds in Papahānaumokuākea”, Dr. Sheldon Plentovich, USFWS Pacific Islands Coastal Program Manager

In Honor of Dr. Kem Lowry



“The Northwestern Hawaiian Islands Coral Reef Ecosystem Reserve is one of the most important initiatives in large marine ecosystem management in the world. It is a privilege to be involved in this extraordinary experiment in marine resource management”